

THIS IS OUR VILLAGE - BLEWBURY

Issue 14, July 1966.

The last month has seen the formation of the Autumn Leaves Club. This should prove a popular addition to the Societies in the Village and we wish the Club and its Committee every success in their enterprise.

Blewbury Parish Churchyard. The Vicar and Churchwardens would like to thank all those who spent the morning of Whit-Monday clearing and tidying the Churchyard.

Tug-of-War-Challenge. A local Tug-of-War team led by Mr. C. Corderoy was victorious at a Fete at Aston Tirrold on Whit-Saturday. This team has now issued an open challenge to all valiant men willing to dispute the tug at the Church Fete on Saturday 25th June.

Mrs. E. Lewis, 1, Berry Lane, wishes to thank all those who enquired about her husband and those who helped her with transport. You will be pleased to know that he is home and is making good progress.

The Autumn Leaves Club. On 15th June an old people's club was formed, it will be called the Autumn Leaves Club and will meet in the Village Hall on the Third Tuesday of each month, commencing on Tuesday 19th July at 2. p.m.

The Committee Members are: Mr. Hickey - Chairman,
Miss Oakhill - Secretary, Miss Smith and Mr. Cronin.

Sometime between the 1st and 6th August will be the Berkshire Flag Day for Old People, 80% of this house to house collection will go towards financing the Autumn Leaves Club.

CHURCH NEWS For Normal Services please see the Annual Supplement.

Blewbury Parish Church: Vicar-Rev. H.J. Pickles, The Vicarage. 267.
Sun. 3rd July, 11.00 a.m. Matins (instead of a Parish Communion).
Sun. 10th July, 11.30 a.m. Holy Communion following Matins at 11.00.
Sat. 25th June, 3.00 p.m. at the Manor, The Church Fete, by kind permission of Dr. and Mrs. Kauntze.
Thurs. 7th July, 7.45 p.m. Hagbourne Village Hall, The Deanery Missionary Festival.

Roman Catholic Church: Bazaar and Jumble Sale.

Sat. 9th July in English Martyrs R.C. Church Hall, Manor Crescent, Didcot, at 2.30 p.m. Refreshments.
Admission: Adult 3d. Children Free.

Alterations to Service 5A. As was reported in an earlier issue, the Thames Valley Traction Co. have proposed alterations to the Service 5A including the withdrawal of services to Chilton. The revised Reading to Wantage service would be timed to connect at Rowstock with buses to and from AERE and Newbury.

The weekday services to Wantage would be at 8.02, 12.57, and 18.22, while those to Reading would be at 7.59, 9.35, 14.35 and 19.39. On Sunday, only the afternoon buses would run.

If this proposal is accepted the last buses will be earlier in each direction but the 7.59 a.m. bus to Reading should be a useful addition.

The Parish Council met on Tuesday 21st June.

No bus to Oxford, City of Oxford Motor Services Ltd. replied to the Parish Council's request for a bus calling at local Villages to take people to the Hospitals in Oxford, by stating that such a service was impracticable. They only maintained the Service No.38 between Wallingford, Blewbury and Didcot, even though it ran at a loss, to provide some transport to the Villages on its route.

The Wolf Cubs Jubilee: A letter is to be sent to the Cubs thanking them on behalf of the Village for their fine effort on Saturday 18th June when they cleared litter from the streets and tidied round the Village Hall and on the Recreation Ground, as part of their Jubilee celebrations.

Gang Mower for the Recreation Ground. The Council decided to try and buy a gang mower for a price near £120.

The Bessels Way Footpath. A letter was read from the County Council stating that the delay in completing the footpath beside Bessels Way, which stops short at the edge of Mr. Savages land, is entirely on the part of the County Council. The delay is not due to Mr. Savage.

Planting a tree on the Pound Mr. Curtoys asked permission to plant a tree on the pound in front of Little Cleve. The Council asked him first to consult with the owners of adjacent properties.

The School Swimming Pool is nearly completed. It is the property of the Local Education Authority, and cannot be used except by permission of Mr. Martin.

The Footpath to White Shoot. There have been complaints that this footpath has become overgrown and it was decided to ask for volunteers to join a working party to clear it from 9.00 a.m. on Saturday 16th July.

The next Parish Council Meeting will be on Tuesday 19th July at 7.15 p.m.

UNIT TRUST OF THE MONTH

ESTIMATED GROSS YIELD PER ANNUM

£9-0-0%

(Equivalent to 5 $\frac{1}{4}$ % net for a standard rate tax payer)

First offered twelve months ago at a price of 5/- each.

Offered price on 17th June - 6/2 $\frac{1}{2}$ d. each.

AN INCREASE OF 24% IN THE CAPITAL VALUE

Investors who purchased the original units a year ago have now an estimated gross annual yield of £11-3-6%. They could have sold their units back to the Managers, on the 17th June, at a price of 5/11d. each.

PORTFOLIO

On 14th June, 1966, the trust was invested in the following categories:

	%		%		%
Aluminium	.30	Gold & Uranium	9.95	Rubber-Palm Oil	11.92
Antimony	1.16	Iron Ore	.69	Sugar Producers	
Asbestos	.16	Jute	.64	& Refiners	2.56
Coal	.63	Lead-Zinc	3.88	Tea	2.79
Cocoa	.23	Merchants-General	8.47	Timber	.39
Copper	12.60	Mining Finance	8.23	Tin	16.30
Cotton	.55	Nickel	1.12	Tobacco	1.18
Diamonds	1.46	Oil	6.75	Miscellaneous	2.14
Edible Fats-		Pastoral	2.32	Cash	1.92
Animal Foods	1.15	Platinum	.51		

Apart from 1.92% in cash and fixed interest stocks, the trust money is invested in ordinary shares.

Sunday Telegraph, 16th January, 1966. - "The Trust of the Year".

Daily Telegraph, 22nd June, 1965. - "a really high yield, commensurate with a reasonable margin of technical safety".

Statist, 25th June, 1965. - "a genuine high yield, a devaluation hedge and some prospect of capital appreciation on the longer term".

FULL DETAILS OF THE ABOVE, AND OTHER LEADING UNIT TRUSTS, CAN BE OBTAINED FROM:-

Richard R. Hunt & Partners,
Unit Trust Brokers,
57, Slade Road,
Didcot,
Berks.

The Village Produce Association.

This flourishing Village Society was formed during the war when the Government were encouraging home gardening in the 'Dig for Victory' campaign. Col. Robinson, who then occupied 'Orchard Dene', R. Taylor and Mr. R. Savage, called a public meeting which supported the idea.

The Society was formed and launched into a programme of meetings and shows, including a Winter Show of stored fruit and vegetables. Notable among the early officers were Mr. R. Taylor, Major Junguis and Dr. Orwin, who lived in the 'Old Malthouse' and later moved to the 'Red House' which he built in its grounds.

The Society soon organised the market stall at which members' produce was sold. Its activities flourished until suddenly in 1956, the Society found itself unable to obtain enough committee members, and with its members despondent over a poor financial position, the Association was suspended. Its activities, however, were resumed in 1957 and have since run continuously and successfully.

It still operates the stall once a week in the summer months, and members' produce for this is collected at several points in the village. It runs three shows each year: the Sweet Pea and Rose show; the Summer Show and the Autumn Show.

The Membership fee of 2/0d. per annum for each family also entitles one to a discount at some local gardening shops.

The Secretary, Mrs. D. Welch of 'Dragonwyke', South Street, 412, is pleased to enroll new members.

FOR SALE Young Budgies for teaching to talk, various colours, reasonable prices. P.E. Corderoy. 'West Wynds', Westbrook st.
WANTED Old guns, modern firearms, any condition. T.Green, Chapel Lane.

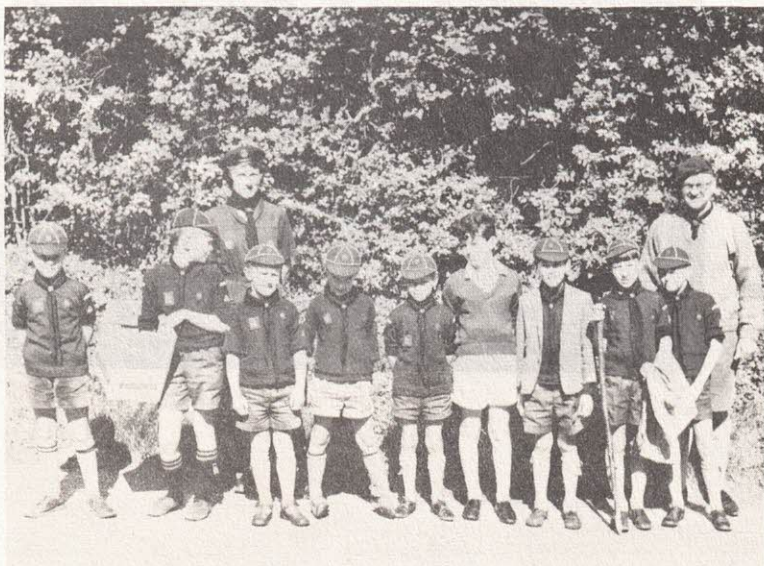
STENCIL DUPLICATING at competitive rates.
Special rates for Blewbury Societies.
Contact J.M. Richards, Healmwic Cottage.
The profits from this service, together with advertising revenue, finance this Bulletin.

EDITORIAL COMMITTEE
P.W. Bartlett, 19 Eastfields (Services)
R.S. Cambray, Great Tree, 419 (Societies)
G.D. Edgar, Concord, South St. (Advertising)
J.M. Richards, Healmwic Cottage 218, (General Editing)



THE LOAD OF MISCHIEF
BAR BILLIARDS TEAM
Winners of the
Wallingford & District
League.

THE SCHOOL
SWIMMING POOL
NEARING
COMPLETION



THE WOLF CUBS
GAVE A DAY TO
HELP KEEP THE
VILLAGE TIDY,
in celebration
of their Golden
Jubilee.

AN ELIZABETHAN EVENING

Blewbury Village Society sponsored a most successful Elizabethan Evening, which was produced by Peter Sheldon in the lovely setting of Ashbrook House on Friday June 10th.

680 people watched from a natural amphitheatre as Queen Elizabeth I arrived on a magnificently decorated Royal Barge for the Show. Madrigals were then

performed by the St. Michael singers, whose expertise was the result of long preparation under Mrs. Latham. They were dressed in splendid costumes under the direction of Mrs. A. Smith and Mrs. Gilbert, and were accompanied by recorders, a Viola de Gamba, Virginals and a guitar, while ladies and gentlemen in Elizabethan costume wandered in the garden.

During the second half the scene was lit by hand torches and floating candles.

After the Show wine, mead and cheese were served by Elizabethan wenches in the torch lit courtyard, which featured a Berkshire waggon and further dances by the Morris Men.

The success of the Show is a tribute to the hard work of all connected with it. Even the weather played a part as the threatened thunderstorm held off until the Show was over.



Garden Contractors.

Lawns, Hedges, Fencing, Flower Beds.

E. F. KERIN,
1, Eastfields. Tel. Blewbury 543.

J. COLIN.

Painting, Decorating, and General
Repairs.

"Downside", Westbrook Street,
Blewbury.

J. SNOOK. Blewbury 313.

Large quantities of second hand
timber.

Bales of hay and straw. Manure.

Good prices paid for old coins.

JULIE AND DANNY CARTHY
welcome everyone to

THE BARLEY MOW

A Charrington House.

M. STREET & SONS - Your local coal
merchants and haulage contractor.

Also agents for evening papers.

For prompt and personal service
ring
Blewbury 225.

R. F. PRIOR & SON - THE STORES
BLEWBURY

Open 8.15- 1 p.m. 2.15- 5.30 p.m.
Saturday 8.15- 1 p.m. Tel. 284.

Grocery and provisions, knitting wool,
agents for dry cleaning, printing and
developing.

G. BILLINGE -
High class family butcher.
The Shopping Centre (A.E.R.E.)
Harwell. Phone Rowstock 324.

Deliveries in Blewbury -
Tuesday, Thursday and Saturday.

SPIRELLA

Made to measure Foundations, swimsuits,
slacks, skirts and tops with colour
matched sweaters and blouses.

JOYCE MARFLEET "Ambleside",
Didcot Road, Blewbury.

Phone: Blewbury 394.

For personal service and advice
for all forms of insurance.

MR. L. A. WEST,
Orchard Road,
Westbrook Street.

Tel. Blewbury 214.

E. SAWYER - (N.A.F.D.)
Funeral furnisher, Cremations arranged.
Memorial and marble stones erected.

Day and night service.

75 New Road, East Hagbourne.

Tel. Didcot 3175.

CLUBS AND SOCIETIES. JULY MEETINGS.

Blewbury Village Society: The Society is most grateful to all those who worked so hard to make the Elizabethan Evening a success. It was an ambitious production which would have been quite impossible without the help of so many people both in front of the "footlights" and behind them.

The Society is anxious to have more members. 2/6d will make you one for life (season tickets and tickets for single events are, of course, extra.) Your membership does not commit you to anything except agreement with the objects of the Society. Get in touch with the Hon. Treasurer, Mrs. M. Russell, Ilbury's, 417.

Brass Band: Mon. Wed. Fri. 5.45 p.m. Band Hut, Recreation Ground.

British Legion, Women's Section: Next meeting will be the Garden Party at Chapel Orchard, by kind permission of Mrs. M. Balding. It is hoped that members will try to come to this social meeting and they will bring an old member along with them, at 2.45 p.m. Tuesday 12th July.

Folk Group: Every Saturday, 9.00 p.m. Dibleys.

Football Club: The Annual General Meeting of the Blewbury Football club was held at the Village Hall, Blewbury on June 15th. The Honorary Treasurer, Mrs. R. Street, reported a balance of £25.11.11. The following officers were elected:-

President, Mr. R.P. Malure; Chairman, Captain H.F. Layman; Vice Chairman, Mr. L.J. Faulkner; Honorary Secretary, Mr. A. Fortnam; Honorary Treasurer, Mrs. R. Street; Match Secretary, Mr. A.W. Faulkner.

The Football Club Fete, in combination with the Blewbury and Upton Village Produce Association Summer Show, will be held at Parsonage Farm, Blewbury (by kind permission of Mr. and Mrs. Taylor) on Saturday July 30th.

Boys Football: Blewbury Robins have now finished their first season as a football club, playing twenty friendly games. Of these they won four, drew three and lost fourteen.

Goals: Scored 28; Against 93.

Robins Scorers: Street 5, Butler 5, Esplin 3, Corderoy 2, Adams 1, Aldridge 1, Hobbs 1, Cochrane 1, Campbell 3, Greensway 2, Reddy 3.

We would like to thank all those who gave us their support, hoping you will do the same next season, when we will be playing in the North Berks Boys League.

Blewbury Robins (Boys) Derby Draw Results, 1966.

1. "Charlottown". J.E. Woodward, Wootton, Woodstock, Oxon. (945)
2. "Pretendre". Mrs. Aunell, The Folly Inn, Farrington. (535)
3. "Black Prince" Mr. Lester Faulkner, Blewbury. (717)

Mother's Club: 18th July. Trip to Homeacres for a demonstration of 'Summer Puddings'. Bus at 6.45 p.m. Barley Mow.

British Legion: Branch Meeting 7.30 p.m. on Wednesday 20th July, at the New Inn.

CENTRAL STORES (A. K. Woodward)
Church Road, Blewbury. Tel. 224.

Daily deliveries of groceries, provisions, fruit and vegetables, hardware, paint, paraffin, chemist sundries.
Agents for Boffins Bread.
Dry Cleaning. Shoe Repairs.
Webbs Seeds.

W. E. WHITE & SON..

Purveyors of first quality meat, have a special interest in Blewbury, having lived here for 30 years. For personal attention ring Didcot 2258.

Deliveries, Tues. Wed. Fri. and Sat.

Blewbury Miniature Poodles and Boarding Kennels.
Sheep Pen, Bessels Way. Tel. Blewbury 216.

Puppies usually for sale.

Cats and dogs boarded.

E. Richardson.

Builder and Woodworking Contractor.

Orchard House,
Bessels Lea.

Tel. Blewbury 219.

ANN - Ladies Hairdresser.

Open Tuesday to Saturday inclusive.

Tel. - Blewbury 201.

Borlase, South Street, Tel. 274.
Antiques, Pottery, Pictures.

EXHIBITION OF PAINTINGS BY
HOWARD PICKERSGILL.
13th July-31st July.

Open Daily Wed - Sun incl.
10-12.30, 2-7 p.m.
Closed Mon & Tues.

BLEWBURY SERVICE STATION
S. W. W. Smith.

For petrol, oil, grease, tyres, etc.
Cigarettes, sweets and ice cream.

Open Sundays. Phone 201.

WANTED FOR EXPORT.

Old fashioned furniture, antiques, silver and valuables of all kinds. High prices paid. Enquiries invited.

P. C. Key, "Applethorpe",
London Road, Blewbury. Tel. 366.

QUOTE: "That's a beautiful drop of bitter at the Load of Mischief".

ANON.

VILLAGE DIARY FOR JULY.

Sat. 2nd 3.00 p.m. V.P.A. Sweet Pea and Rose Show. Upton.
Tues. 5th 2.30 " V. Hall. Clinic.
Sat. 9th 8.00 " Parsonage P.T.A. Barbecue.
Mon. 11th 2.30 " Barley Mow. Travelling library.
Tues. 12th 2.45 " Chapel Orchard. British Legion Garden Party.
Thu. 14th 2.45 " Mother's Union, Didcot Branch.
Sat. 16th 9.00 a.m. White Shoot Footpath - working party.
Mon. 18th 6.45 p.m. Barley Mow. Mother's Club bus to Homeacres.
Tues. 19th 2.00 " V. Hall Autumn Leaves Club.
Tues. 19th 7.15 " V. Hall Parish Council.
Wed. 20th 7.30 " British Legion Branch Meeting at the New Inn.
Sun. 24th 7.30 " Last date for entries for August issue.
Mon. 25th 2.30 " Barley Mow. Travelling Library.
Thu. 28th 7.30 " W.I. Garden Meeting at Chapmans.
Sat. 30th 3.00 " V.P.A. Annual Summer Show at Parsonage.

Mother's Union: This month members are invited to join Didcot branch for their meeting on 14th July at 2.45 p.m. on Thursday (not Wednesday our usual day.) Names please by 5th July for those wishing to go, to P. Taylor.

Thank you all for making the Blind Party such a success last month.

Painting for Pleasure: Thursdays at 7.30 p.m. Old School.

P.T.A.: Barbecue. 9th July 8.00 - 11.30 p.m. The Orchard, Parsonage Farm. Admission 2/6, Children 1/-. Tickets available from P.T.A. Committee Members. Fully Licensed Bar. Music by Mick Clarke and his Group. Side Shows.

Royal Antedeluvian Order of Buffaloes: Mondays at 7.45 p.m. Load of Mischief.

12th North Berks Scout Group: 5 boys from the Cub Pack have gone up to the Scout Troop. The Wolf Cub Pack attended the Berkshire Golden Jubilee Rally in Windsor Great Park on 11th June.

Village Produce Association: The first Show of the year is on Saturday, 2nd July at Upton Methodist Church, teas at Corderoys opposite the Hall. This will be the fourth annual Sweet Pea and Rose Show we have staged and it is proving a very popular Show. Do try to come along to see the beautiful entries. On 30th July we will be holding our 19th Annual Summer Show at Parsonage Farm. We hope that new members will find something of interest to them in the schedules which will be around shortly and they will send their entries along to me, to help us have a record Show. D. Welch. Honorary Secretary.

Women's Institute: 28th July at 7.30 p.m. Garden Meeting in the grounds of Chapmans. Speaker, Mrs. Baker of Tidmarch on 'Flower Arranging'. Competition, Best flower arrangement not more than 8" across.

N.B. Visit to Home Acres June 30th. The bus leaves the Barley Mow at 6.45. Fare will be approximately 3/-.

Editorial Note: Written contributions to Great Tree by 7.30 p.m. on Sunday 24th July.