

Blewbury Bulletin

Number 657 October 2023

HEATHER SAMUEL

Jimmy and his family would like to thank all their Blewbury friends and dogwalkers for their very sympathetic cards and kind messages following Heather's death on August 26th.

DEREK BUCK

As you may have heard, sadly and very unexpectedly Derek passed away on 10th September. Derek had lived in the village for 87 years, served on the Parish Council, Village Hall committee and had been a member of the Malthus Trust for many years. We will be having a collection for The British Heart Foundation and the Malthus Trust.

The family would like to invite you to a celebration of his life on Wednesday 4th October in the Village Hall – please drop in between 1.30 and 5.30.

ARE YOU FED UP WITH UNFILLED POTHoles AND OBSCURED OR DAMAGED ROAD SIGNS?

Please consider becoming a Fix My Street 'SuperUser'...These are volunteers who support the work of Oxfordshire County Council's (OCC) Highways team. OCC currently has around 95 Fix My Street SuperUsers across Oxfordshire and would like to recruit more. SuperUsers monitor the pavements and low-speed roads in their neighbourhoods and can raise direct requests for repair works, as long as they meet the specific criteria outlined during the online training. Ideally volunteers would already be familiar with the FMS system at www.fixmystreet.com/

For more info please contact the Volunteer Coordination team at volunteercoordinationteam@oxfordshire.gov.uk

GREAT WESTERN PARK GP SURGERY

Our District Councillors, Hayleigh Gascoigne and Debra Dewhurst, have provided this update on the slow progress being made on the provision of a new GP surgery to support Didcot's huge population growth:

The Buckinghamshire, Oxfordshire and Berkshire West (BOB) Integrated Care Board (ICB) is responsible for healthcare services in Oxfordshire, including the Vale. The District Council has been working hard over the past few years to help overcome a series of legal challenges that have caused delays in the ICB bringing forward a health centre on Great Western Park.

The District Council has had some constructive conversations with Taylor Wimpey, the housing developer for Great Western Park who went through some organisational changes earlier this year. These have centred around the challenges facing the health centre and they continue to be helpful. During those ongoing discussions with Taylor Wimpey, the council have also made progress on play areas and allotments, to assist the developer to ensure they can be opened for residents to use.

The District Council are currently working with a number of partners to tackle issues related to the delivery of funding and leasing arrangements for the land and any future building, and they have recently taken some steps that should simplify and speed up that process as they progress next steps. At the same time, the ICB continues to work with the local medical practice, Woodlands Medical Centre, to expand their current facility at Woodlands Road in Didcot.

The council is currently looking at what it can do to provide more regular updates to the community about the hard work they're currently doing to try and help partners like the ICB deliver the health centre that Great Western Park and Didcot badly need.

Hayleigh and Debra can be contacted via email at hayleigh.gascoigne@whitehorsedc.gov.uk and debra.dewhurst@whitehorsedc.gov.uk. They also post on their Facebook pages: www.facebook.com/CllrHayleigh and [http://www.facebook.com/Debra4BlewburyAndHarwell](https://www.facebook.com/Debra4BlewburyAndHarwell).

PRE-SCHOOL LOTTERY RESULTS

Winning numbers for the September Blewbury Pre-School Lottery were as follows: 1st - 090; 2nd - 081; 3rd - 016. Congratulations to all the winners and big thank you to all our members. To join the Blewbury Pre-School Lottery visit www.blewburypreschool.co.uk, or email us at lottery@blewburypreschool.co.uk.

BULLETIN STOP PRESS SERVICE

If you would like to receive urgent village news and information by email, you can sign up to the Bulletin Stop Press service at www.blewbury.co.uk. Powered by MailChimp®, all emails are blind copied so no addresses are shared.

Creative Catering Blewbury

We have moved!

Unit S9 Greenlands Farm Moulsoford

All aspects of catering professionally presented
Weddings, Parties, Pig roasts, Buffets,
Funerals, Canape receptions & Business lunches

Over 25 years experience

For more information visit:

www.creative-caterer.co.uk

Find us on facebook at Creative Catering

Email – sheilaaustin@btinternet.com

Phone – 01235 850931 or 07743 368373

Pauline's Personnel

*All grades permanent and temporary office staff provided
(other types of staff – by arrangement)*

Confidential correspondence typing/word processing service, plus theses, reports, manuscripts etc. Mail shots. Tapes transcribed. Fax and photocopying service. General Book-keeping, Wages, V.A.T. and P.A.Y.E. returns.

31 New Road, East Hagbourne, Didcot, Oxon OX11 9JX

Tel: (01235) 812067

Fax: (01235) 811480

E-mail: paulinecox31@gmail.com



A World of Dance for Children!

Excellent 5 Star Google Reviews!

Imaginative and engaging classes with:

- Musical Theatre
- Freestyle
- Dance Shows
- IDTA Exams
- Super Fun Competitions

Classes Every Monday (Termtime)

3.30pm – 4.10pm Sweet Pea Classes (4-6 years)
4.10pm – 5.00pm Poppy Classes (7-9 years)
5.00pm – 5.50pm Lily Classes (10- 12 years)
5.50pm – 6.40pm Tiger Lily Classes (13 years +)
Performance Squad – 6.45 – 8pm (by invitation only)

bettybloombdance@gmail.com

07785 232862

<http://bettybloombdance.co.uk>

Blewbury Brass Band

Rehearsals are held in the Band Room, Bohams Road, Blewbury, 7.30 to 9pm every Wednesday. All ages/ levels welcome. Instruments supplied. Very friendly group.



Band Room available for Hire

£8 per hour (min. 2 hrs). Large practice room. Toilet but no kitchen or storage facilities. Suit pop groups, theatrical rehearsals, group meetings, etc.

Enquiries secretary@blewburybrassband.org



Family Farm Shop Established 1960

Greengrocer, Florist, Nursery, Giftware & Pet Food

The Nurseries, London Road, Blewbury, OX11 9HB

01235 850352

savagesblewbury.co.uk

All aspects of heating, plumbing and gas work undertaken
Fully qualified and insured



Tom Houseman
Heating and Plumbing

- Boiler servicing, maintenance and installations
- Chimney sweeping and wood burner installations
- Bathroom design and installation
- Underfloor heating
- Water softeners
- Smaller jobs (taps, toilets, showers etc)

Tel: 0791 773 3492

www.tomhousemanheatingandplumbing.co.uk



Wild to Wonderful



● Design ● Transform ● Plant ● Grow ●



01235 835664

office@wildtowonderful.co.uk

www.wildtowonderful.co.uk



SLS
OXON LTD

**CIVIL ENGINEERING - BUILDING
SURFACING CONTRACTORS**

0330 043 6365

07790 000 896

WWW.SCSOXONLTD.CO.UK



BOX OFFICE OPENS ON FRIDAY OCTOBER 6TH AT 9 AM www.blewburyplayers.co.uk

The countries taking part have now been nominated, the composers are hard at work and hopefully the creative juices are starting to flow... not a pretty sight but needs must. After years of failure, it is to be hoped that the UK entry can stand a chance of winning. Can the UK entry win? Can we bring back those halcyon days of "Congratulations", "Puppet on a String" and "I can only eat half a sausage"....

The twelve countries battling to win the Song for Europe Trophy fight it out on three separate nights (Thursday November 30th, Friday December 1st and Saturday December 2nd). Each night is a "one-off" contest. Will it be a different winner every night or will one song dominate the competition? Each evening we have twelve tables (10 seats per table - £15 a seat) with each table representing a participating country. For one night you could be Danish, Spanish, Irish, Italian, German, Dutch, Swedish, French, Greek, Belgian, Australian(!) or be patriotic and represent the United Kingdom.

It would really enhance the evening if audience members joined in the spirit of the evening and donned some form of fancy dress or national costume according to which table they are on. Please also feel free to bring food but do **refrain from bringing your own drink as we would like you to support the Bar.**

Each table casts votes in order to find the evening's winner but, as per Eurovision, you cannot vote for your own country. Hopefully there will be no bribery or rigging of votes – but don't bet on it!!

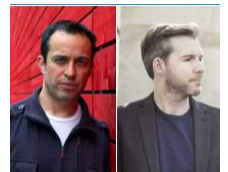
BOX OFFICE OPENS ON FRIDAY OCTOBER 6TH AT 9 AM www.blewburyplayers.co.uk

Tickets limited to a maximum of 10 per person per evening. Be there and see history in the making!!!

DON'T FORGET YOUR COUNTRY NEEDS YOU!!

JAZZ AT MOCKBEGGARS: JASON REBELLO & GWILYM SIMCOCK - SUNDAY 29TH OCTOBER 5.30 PM

Considered to be the two very best jazz pianists Britain has ever produced, we are beyond excited that we have these two masters and great friends performing for us, in solo format, then in duo, one on the Yamaha grand piano and one on a vintage Fender Rhodes electric piano. An utterly mind blowing prospect, right here in Blewbury at Mockbeggars Hall, Church End, OX11 9QQ. All tickets £30, strictly prepaid through lzabela@dircon.co.uk



VILLAGE HALL NEWS

The trustees at the village hall are still working very hard on the issues of storage, health and safety and getting all the maintenance checks completed. We held a successful meeting with some of our user groups, and are now looking at tidying up the areas outside, Autumn is great for having a bit of a clear up of overgrown shrubs etc, and we are looking at how to make the outside space look better, and more user- and wildlife-friendly.



NEXT FOOD BANK DATES: 29TH SEPTEMBER – 9TH OCTOBER 2023

The Didcot Emergency Foodbank is currently helping an average of 84 families **each session** due to very high demand – that is almost 800 families every month. If you are able to give even one item, collection boxes are outside the Charity School House on these dates or at Blewbury Post Office any time. They ask for: -

- Tins of meat / fish / potatoes / carrots / peas / soup / fruit / puddings
- Jars of pasta sauces / jam / peanut butter / coffee (small)
- Packets of pasta / rice / packets dried potato / breakfast cereals / biscuits / treats / tea
- Cartons of long-life milk / long-life juice / hot chocolate
- Toiletries, toilet rolls, tissues & laundry products, washing up liquid

Please make sure that all food is within its sell by date.

Foodbank cannot accept alcohol, razors, medicines, or homemade preserves

ALL DONATIONS ARE HUGELY APPRECIATED -- SINCERE THANKS FOR YOUR CONTINUED SUPPORT

To make a cash donation online, however small, visit <https://churchsuite.co.uk/donate/and select Foodbank>.

MANY THANKS - ST MICHAEL'S ACTION GROUP & DIDCOT FOOD BANK



HAIR BY SHEILA
Mobile Hairdresser

07895 051169
NVQ QUALIFIED HAIRDRESSER

sheilahelenasmith@gmail.com



01235 850579 | 07808 401554
www.blewburybuilding.co.uk

Meryl computer doctor & tutor

technical expertise with the human touch

Setup PC, Apple, tablet, phone, internet, printer
Fix technical & user problems, big or small
Learn getting started, new skills, better ways

07794 656607

info@computertutorabingdon.co.uk
www.computertutorabingdon.co.uk



Woodway B&B
Serviced accommodation
with off-street parking & wi-fi
Self-service continental-style
breakfast

Call Matt on 07817 955205
mattnap@tiscali.co.uk



**Landscaping, Mowing,
Strimming
Property Services
Decorating, Floor & Wall
Tiling, Kitchen &
Bathrooms PVC Windows,
Extensions & Alterations
No Job to Small**

**Build
Design
and
Renovate**

Call now for a free no obligation quote

07866 481808
graham-hammond@hotmail.co.uk

"Oxfordshire's award winning local
independent garage"

T: 01235 850707

Scotlands Ash Garage is a family-run business that thrives on its reputation for excellent service, honesty and transparency. We've been serving local motorists in Didcot & South Oxfordshire for over 30 years...

We offer a wide range of services:

- MOT (available from 6am by appointment)
- Vehicle servicing on all makes and models
- General repairs on all makes and models
- Tyre Fitting ● TerraClean Engine Clean ● Air-con check & re-gas
- Paint / Bodywork ● Batteries ● Tyres ● Complimentary Courtesy Car
- 24hr Booking Facility through website

We also have an air-conditioned waiting room with complimentary internet access, drinks and TV.



Scotlands Ash Garage, Main Street, West Hagbourne, OX11 0NA T: 01235 850707
E: enquiries@scotlandsashgarage.co.uk
www.scotlandsashgarage.co.uk

Did you know? You have the right to repair & service your car at an independent garage and it will not invalidate your warranty



**SCOTLANDS ASH
GARAGE**




George Daniel Long MHort (RHS) MSGD MCiHort
Garden Design and Horticultural Consulting

01235 850489
www.georgedanielong.com

SGD SOCIETY OF GARDEN DESIGNERS
Chartered Institute of Horticulture
The Association of Professional Landscapers



**JE
Window Cleaning**

Your local window cleaner
offering you a friendly and
reliable service

Text or call Jake for a
no-obligation quote
07980 861002

BLEWBURY BRASS BAND

Blewbury Brass Band is a friendly and welcoming village band, solidly rooted in the local community of Blewbury, Didcot and surrounding villages. Our objective is to play a wide variety of music styles – classical, jazz, musicals/shows, chart hits, as well as traditional brass band marches – for the enjoyment both of our audiences and (importantly) ourselves.

We are keen to encourage people who have experience of playing a brass instrument, however long ago, to pick up an instrument again. As well as those completely new to brass, with a training band who meet on Mondays at 5.45pm - 6.30pm. Our Main band rehearsals for more experienced players are on Wednesday evenings, 7.30pm - 9.30pm. We have instruments for hire and tuition available. At the moment we are also in need of a percussionist/drummer to play with the band.

So come along! Players of all ages and abilities will receive a warm welcome. Our band rehearse at the Band Hut on Bohams Road Blewbury (next to the tennis courts) and can be heard playing at local fetes, parks and community events throughout the year. Enquiries to secretary@blewburybrassband.org

This November the band will be putting on our first concert since before Lockdown, so save the date - Saturday November 25th, 7pm at Blewbury Village Hall



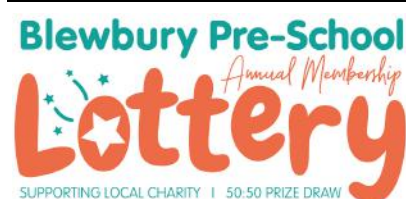
POST OFFICE NEWS

Let me introduce myself: I am Sarah and I'm sure a few of you have seen me in the Post Office as I have been working there over the summer. Sadly I still haven't officially taken over but we are hopeful it won't be too much longer. We have started operating our new opening hours. These will be:

Monday - 9am to 3pm
Tuesday - 8.30am to 12pm, 2.30pm to 5pm
Wednesday - 9am to 3pm
Thursday - 9am to 3pm
Friday - 8.30am to 12pm, 2.30pm to 5pm

In other news, the cost of a 1st class Stamp will be increasing from the 2nd of October so buy any books you need before then. Overseas surface Mail deadline is the end of October for delivery in time for Christmas. Old £20 and £50 notes will be obsolete from the end of September but you are able to come in to the post office and bank them. New Shirley Bassey and Paddington Bear stamps are in and Harry Potter stamps are coming soon.

I look forward to meeting more of you soon and seeing you around the village! *Love Sarah, Karen and Andrew*



BLEWBURY PRE-SCHOOL LOTTERY ANNOUNCES NEW CO-ORDINATORS

From October, the Blewbury Pre-School Lottery will be run by Lisa Shayler and Vikki Claridge. Lisa and Vikki have previously served on the Pre-School committee when their own children were there. The appointment of Lisa and Vikki is part of the transition following Philippa Weeden's departure as Chair, which will be formalised at the AGM on 12th October. Blewbury Pre-School is incredibly grateful for Lisa and Vikki's help with this essential fundraising initiative. If you need to contact Lisa or Vikki about the Lottery, please email lottery@blewburypreschool.co.uk. If you're interested in joining the Lottery, with a chance to win cash prizes every month, email Lisa and Vikki, or visit www.blewburypreschool.co.uk for further information. For our September Lottery winners, see page 1.

COULD YOU BECOME A TREE GUARDIAN?

Oxfordshire County Council is planning to plant thousands of trees on public land across Oxfordshire with hundreds having already been planted. Now they need help to take care of the young trees, which need daily watering and regular weeding in spring and summer to help them establish and thrive.

To find out about becoming a tree guardian for a community tree near you see the [Climate Action website](https://www.climateaction.org.uk/). If you'd like to find your nearest community tree, get some advice, or just let the Tree Service know that a tree is being cared for then get in touch with them at tree.planting@oxfordshire.gov.uk

**BORLASE
PICTURE
FRAMING**
07901 552355

THE RED LION

Blewbury



Opening Hours.

Wed/Thur from 5pm

Fri/Sat/Sun from 12 noon

Kitchen Hours

Thur (Street food) 5.30-8.30pm

Fri & Sat 12.30-2.30pm

And 6-9pm

Sun (Roast) 12.30-3.30pm

Tel: 01235 850 403

bookings@theredlionblewbury.co.uk

www.theredlionblewbury.co.uk



Larkmead
VETS

Outstanding
independent pet
care for
South
Oxfordshire
24 hours a day

www.larkmead.co.uk

Drum
Landscaping

- Hard and Soft Landscaping • Fencing • Garden Clearance
- Garden and Grounds Maintenance • Hedge Planting
- Hedge Cutting • Grass Cutting • Turfing • Power Washing
- Winter Gritting • Licensed Waste Carrier • Insured

Call Nick – Home: 01235 859229
Mobile: 07922 701634
Email: ndrumlandscaping@gmail.com

**HAIR BY
HAZ**

**MOBILE
HAIRDRESSER**
Tel : 07454 794009

Call now to make an appointment.
Hair services in the comfort of your own
home. No waiting around! No travelling!

Services include:
Perming, Colouring, Gents' hair cutting,
Ladies' spray down cuts, Wash and
blow dry, Shampoo and Sets, Children's
hair cuts etc...

Senior rates available too

Ringrose
Tree Services
Operating since 1992

OUR SERVICES INCLUDE
Tree Surgery • Tree Pruning
Crown Reduction • Crown Thinning
Hedge Reduction • Stump Grinding
Tree Surveys • Tree Planning
Soil Decompaction

01865 735235
info@ringrosetrees.co.uk
www.ringrosetrees.co.uk

Will Nutt

Kitchen & Bathroom Fitting,
Wall & Floor Tiling, Laminate Flooring,
General Maintenance,
Landscaping & Fencing

Tel - 01235 817346 / 07557 363517
Email - nutt.will@gmail.com

**ASTON TIRROLD CENTRE
FOR REFLECTION**

Away Days and Quiet Days
Workshops and Groups
www.reflect.freeuk.com

Aston Tirrold United Reformed
Church, Spring Lane, Aston Tirrold

**HOWARD
PLASTERING**

Established local business for over 20 years

All aspects of plastering works undertaken

**LISTED BUILDING WORK
LIME WORK
FULL DECORATING SERVICE PROVIDED**

For a free estimate please contact
01235 851 624 // 07884456118

LONGPINE
Village Roofing
&
Property Maintenance

Sympathetic to character
properties.

FOC written quotations.
Re-roof and restorative
solutions, including flat
roofs.

oxon@longpine.co.uk

J Roxborough Services

Tel: 01235 203881
Mob: 07909 931601

Providing Commercial & Residential
Maintenance Services
All building maintenance & small
building works undertaken.

- Full property renovations
- All aspects of plastering & rendering
- Floor & wall tiling
- Painting & decorating
- Brickwork repointing
- Flat roof renewal & roof repairs
- Bathroom & kitchen fitment
- Fascia & gutter replacement
- Free quotes, fully insured,
recommendations freely available

johnroxborough@hotmail.co.uk



Sustainable Blewbury

www.sustainable-blewbury.org.uk



APPLE JUICING 2023: Sunday afternoons, 2–4 pm at Blewbury Manor: 8 October and 22 October

Bring WASHED APPLES (bad bits removed, but *no need to remove cores*) and your own clean bottles or containers. **COST:** £1.50 to press a large bucket or basket of apples. (Sorry, we can't supply bottles.)

PASTEURISING: Needs GLASS screw-top wine or drink bottles. **COST:** 30p per bottle (juice will keep for a year). Pasteurisation takes a while so you *must* arrive well before 3.00 pm – note that you can also freeze unpasteurised juice in plastic bottles.

TOO MANY apples for our public sessions?

You can HIRE our equipment for a day, for only:

£15 in Blewbury and Upton, £20 elsewhere

For bookings or more information contact us at: info@sustainable-blewbury.org.uk or **07935 232296**



Blewbury Nature Reserve: Would you like to volunteer to help at the Nature Reserve? The next dates (provisional) are **14 Oct, 11 Nov, and 9 Dec** from 10am to noon. We will be mulching trees and weeding paths and hedging. It's a great way to meet other people and get fit. Meet at the Reserve with your own gloves and a drink. To confirm the dates and more details email secretary@sustainable-blewbury.org.uk.

Repair cafes: In spite of the rain we held a very successful repair cafe on 17 September. Nearly every item was able to be repaired or sharpened – a record! The next repair cafe will be in the Village Hall at **2pm** on **19th November**, more details to follow in the November Bulletin.

BLEWBURY FREECYCLE FREE ITEMS TO A GOOD HOME	E-MAIL	TEL NO.
Remote control slide projector and 130cm by 130cm screen on tripod stand.	Mick Moore mickandhelenmoore@btinternet.com	850998
1. Pink Wooden Dolls' House 0.5m w, 0.4m high with pitched roof 2. Rotary garden clothes dryer. 1.3m diameter when open. Old but complete and in good working order 3. 3 x simple-style chrome and opaque glass wall lights 4. Small Tripp suitcase with wheels. Cerise colour. 0.35m wide x 0.5m high x 0.2m deep	Jean Richards jean@brooksend.co.uk	07966 774235
Mothercare travel cot	Tony & Paula tony65sibley@gmail.com	850964

To freecycle your item please send a short description, email & phone number to Lydia Inglis (lydandmuz@gmail.com)

Getting involved in Sustainable Blewbury contributes to the village and its environment.

To participate, email us at: info@sustainable-blewbury.org.uk or phone 01235 850372.

COFFEE & KIDS!

Blewbury baby and toddler group meets again on **Monday 2nd October** in the Vale Room, Blewbury Village Hall, 9.30am - 11am. Toys, play, chat and refreshments with singing near the end of the session, in a safe and friendly environment. Our "crafty" mum, Kate, will have some simple Autumn pictures for the children to create. Mothers' Union hosts look forward to welcoming you. A £2 donation is appreciated towards our costs. *Louise - 07837 009730*



HENGE AT THE CORNERSTONE

The HENGE festival is a community celebration of the landscape and history of the Wittenham Clumps. Following the success of the festival during the 2022 Autumn Equinox, a continuing exhibition will be held this year from November 2nd to 26th at the Cornerstone Arts Centre,

Didcot. **HENGE at the Cornerstone** will feature a range of artwork, music, and poetry by leading local artists: Dionne Freeman, Sophia Stewart-Liberty, Anna Dillon, Jane McDonald, Cally Shadbolt, Nic Hamilton, Philip Koomen, Adrian Brooks, Stephen Eyre, Chris Baines, Jill Battson, and work by pupils from local Primary and Secondary schools. Opening hours: 10am to 5pm. For further information visit www.hengefestival.com or www.cornerstone.arts.org.

BLEWBURY CROQUET CLUB AGM

Our AGM will this year be held on Tuesday, October 17th in the Melland Room, starting at 4pm. Light refreshments will be available. Anyone is welcome to attend, including potential new members, but please let me know in advance for catering numbers. *David Long, Club Secretary, 07484 360169 / secretary@blewburycroquetclub.co.uk*



BONFIRE NIGHT
SATURDAY 4th NOVEMBER

TICKERS FOLLY FIELD
GATES OPEN AT 6:00 pm;
BONFIRE AT 6:30 pm; FIREWORKS AT 7:00 pm

TICKETS ON THE GATE: ADULTS £5, UNDER 16s £2
 Ticket price includes baked potato. Beer, wine (mulled and non-mulled!) also on sale.
Any wood for collection?
 Email: blewburybvs@gmail.com or call Caroline on 07790566754. Collection fee applies, spaces may be limited

PAINTER AND DECORATOR
 Fully Qualified, Providing a High Quality Service, Free Quotations, Fully Insured

GARY CUDDON

9 Harwood Road East Hagbourne
 Didcot
 Oxfordshire OX11 9LX
garycuddon@aol.com
 Mobile 07827752904
 Home 01235510680



principal pilates

PILATES CLASSES in E. Hagbourne
Tuesdays & Fridays 12.45 and 2.00

principilpilates.com
carolinehunt@btinternet.com
 07758 814578

Only 20% of businesses get to the 5 year mark

BUSINESS OWNERS
 If you want to improve your chances, get in touch.



At Outside ideas we're on a mission to help people & businesses grow

www.outside-ideas.com **07818 388 642**

S J Keats Builder

Property maintenance / improvements, renovations, brickwork and pointing, painting and decorating, patios, roof repairs, wall and floor tiling, small extensions, plastering.

Fully insured, established 1991

keatsorchard@aol.com
07962 271926, 01235 834342



WHITE HORSE HORTICULTURE

J J Woodage

ALL ASPECTS OF GROUNDS MAINTENANCE INCLUDING ALL TREE WORK * CERTIFIED AND FULLY INSURED

OUR SERVICES INCLUDE:
 Tree pruning ✦ Tree removal
 Crown lifting ✦ Crown reduction
 Hedge cutting ✦ Hedge reduction
 Garden clearance ✦ Garden renovation

A professional and reliable service at an affordable price
 Tel: 01235 766893 Email: woodagetrees@gmail.com



BEAUTY ESSENTIALS

Gel Nails, Manicures, Pedicures, Facials, Massage, Waxing, Electrolysis, LVL Lash Lifts, Spray Tanning, Eyebrow & Eyelash Tinting, Non-surgical Face & Body Lift Treatments, Ear Piercing, Special Occasion Makeup

GIFT VOUCHERS AVAILABLE

beautyessentialsoxon.co.uk
 5 Lostock Place, Didcot, OX11 7XT

[f beautyessentialsoxon](https://www.facebook.com/beautyessentialsoxon) [@beautyessentials_didcot](https://www.instagram.com/beautyessentials_didcot)

01235 359327
 07583 371198

CPPM Locksmiths

- Locked Out
- Key Snapped or Lost
- Faulty Locks
- Lock Upgrades
- UPVC Locks
- 24 Hour Emergency Locksmith Service



www.cppm.org.uk
 email: colinpizzie@btinternet.com
 tel: 01235 239068 / 07760 537147



BLEWBURY WI NEWS

Our October meeting is on **Wednesday 25th October 7.30pm** in the Vale Room. We will enjoy hearing about "My life and times as a film extra". Our speaker has appeared in all sorts, from 'Midsomer Murders' to 'Father Brown'. What does a film extra do? The highs and lows: Does one get to meet the stars? Does one get fed and paid? How does one become an extra? Do come along.

We love to have visitors, if you'd like to come along with someone else or find out more, ring our Secretary, Joy, on 850543 or email blewburywi@gmail.com. By now we will have had our stand at the Blewbury Clubs and Societies day – so we hope you popped by to say hello.

Recently we had a marvellous visit and afternoon tea at the Vale and Downland Museum in Wantage. As well as our monthly meetings how about Scrabble, craft, walks, Mah Jong? Plus our new Book Club has just launched! We love to make new friends. So, if you're new to the village or have been here a while, just come along. Don't be shy.

Calendar of events

Every Monday afternoon	2.30pm	Mah Jong	Sharon
Tuesday 3 October	9.30am	Lyn's walk	Lyn
Wednesday 4 October	7pm	Evening Scrabble	Kath
Friday 6 October	7pm	Craft evening	Karen
Thursday 12 October	2.30pm	Afternoon Scrabble	Jane
Friday 13 October	10.30am	Coffee morning	Trish
Wednesday 25 October	7.30pm	Main meeting	Joy

STYLE ACRE HALLOWEEN DISCO

Dan Orpin, one of Style Acre's ambassadors, is hosting a Halloween Disco from **4pm to 8pm on Sunday 29 Oct at the Marlborough Club, Didcot**. It's going to be a night of spooky Halloween dancing and great music, along with a raffle and fancy-dress competition. Tickets are £5 (support workers free if supporting) and can be obtained from our website at <https://bit.ly/2910disco>.

BLEWSHED NEWS

Meetings: A full house of club night attendees on Tuesday 12th September enjoyed a talk on the history of wildfowling in the Solway Firth, by local historian Peter Cockrell. He focused on the role of the 'duck punt' and highlighted some well-known and influential wildfowling who became great wildlife and environment conservationists, such as Gavin Maxwell and Sir Peter Scott. Peter Cockrell's father, Gus, was also a keen wildfowler and duck punter, owning both a single and a two-man punt. Gus's punts have now reached the end of their careers, have been restored by Peter, and are about to be installed in the new museum of maritime history in Wigtown.

Our next meeting, on Tuesday 10th October also has a maritime theme, when Keith Mosley, secretary of Didcot Woodturners, will give a presentation on the salvage of 'Cordelia' one of the Dunkirk 'Little Ships', which took part in the British Expeditionary Force evacuation of 1940.

Community Projects: Work has almost finished on the new bench for Tickers Folly Field. We hope to get it installed this autumn, hopefully giving visitors the chance to sit down and enjoy it before the winter weather sets in.

Other Projects: Trug production continues apace, as we try to keep up with demand. If anyone has ideas for other items they would like to see BlewShed produce please let us know.

Opening times and membership: Regular Shed opening times are Tuesday and Saturday afternoons 1.30-4.00 pm. BlewShed is also open on Thursday afternoons 2.00-4pm for those with a special interest in electronics.

BlewShed annual membership fee is £25 and is excellent value, that not only includes expert advice from fellow members but also the use of a very well-equipped workshop. Come and learn some new skills!

'Club night' meetings are on the second Tuesday of each month at 7.30-9pm in the Shed (opposite the tennis club) and everyone is welcome, whether or not you are a member. We look forward to seeing you.

Mike Wrottesley, BlewShed secretary <https://blewshed.home.blog/news/>

BRIDGE CLUB

Confirmation that the Annual General Meeting will be held at 7pm on Tuesday 10th October in the Vale Room ahead of a shortened session of bridge. Do please make every effort to attend and make your views known.

The end of October marks the finish of our playing year - we have been running competitions for the Tuesday ladder (men and women) and Tuesday Handicap Pairs. It looks like the cup for the Tuesday handicap Individual will not be awarded, as only one player has qualified with the necessary number of sessions with different partners.

Friday Social Bridge sessions have recommenced - dates for October will be 6th, 13th, 20th and 27th.

Thursday night online sessions will be - Wantage Realbridge October 5th and 19th, Blewbury BBO, 12th and 26th.

Michael Allen 851870



News from St. Michael's

Rector - The Revd Jason St. John Nicolle
BENEFICE OFFICE - 01235 850267

You can contact the clergy & staff on: -

Father Jason St John Nicolle

01235 850267 rector@churnchurches.co.uk

Revd Louise Butler

07837 009730 revlouiseb@aol.com

Revd John Clarke

01235 510073 jphclarke@gmail.com

Revd Dr Mark Rhodes-Smith

01235 850267 mark.rhodes-smith@churnchurches.co.uk

Elaine de Ridder, Operations Manager, is available Monday to Friday from 9.00-2.30 pm on 01235 850267, 07434 686044 or via email office@churnchurches.co.uk. Website www.churnchurches.co.uk

Bookings for Weddings, Baptisms and funerals may be made by contacting the office via email or on the office number.

Services for October 2023 at St Michael's Church:

TRINITY 17	† Sunday 1st	8.00 am	Holy Communion
		10.30 am	All Age Harvest Festival
TRINITY 18	† Sunday 8th	10.30 am	Parish Eucharist
		3.00 pm	Outdoor animal service, Playclose
TRINITY 19	† Sunday 15th	10.30 am	Choir-led Taizé Service
	Thursday 19 th	10.00 am	MU Holy Communion
TRINITY 20	† Sunday 22nd	10.30 am	Parish Eucharist
BIBLE SUNDAY	† Sunday 29th	10.30 am	Village Service

In addition to the services in Church, we continue to have an **online service at 10.30 am every Sunday** via the link <https://meet.goto.com/ChurnBenefice/sundayservice>. We also have **online Compline at 8pm during weekdays** via link <https://meet.goto.com/312446493>.

Everyone is invited to the mid-week communion service **every Wednesday at 10am at St Andrew's Hagbourne.**

Please contact the Office if you would like to receive the Churn newsletter by email every Friday. You can unsubscribe at any time.



Congratulations to Ollie and Chekkie Morrison who brought their son **Cosmo Alexander Harry Morrison** to be baptised at St Michael's on September 17th.

Creator God, we thank you for the gift of the life of this child who has been brought to be baptized. May your blessing of peace and joy be with them and protect them all of their days.

Conversations around Christianity

7.30pm and 8.30pm in the Benefice Centre

Sunday 8th October for 4 weeks

Do you have questions about the Christian faith? Would you like to learn about the basics of the Christian faith? **Everyone welcome** to this new group lead by Father Jason, no matter what your background or beliefs are! You can come with questions or just come along to enjoy lively discussions and to learn together. Enquiries with Elaine in the office.



HAPPY VOICES FAMILY CHOIR



A great opportunity to sing together in our HAPPY VOICES FAMILY CHOIR - A choir for family members of all ages. Meeting every Monday during term time from 6.00-6.45pm for a short time of musical fun in the Benefice Centre, Blewbury. Singing in a choir helps young people to develop their concentration, confidence and social skills plus find their voice and develop their musical knowledge. There is no cost and no entry requirements other than enthusiasm! Come and have a go!



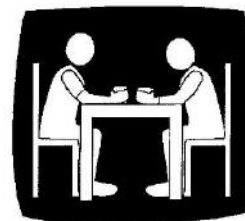
HARVEST FESTIVAL All Age Service Sunday 1st October 10.30am

Donations for the food bank welcome



Learning from Each Other

Sometimes the simplest ideas are the most easily overlooked. Take, for example, the question of how we should tackle the big issues facing our communities and our world. There are always lots of people willing to tell us what the issues are, and what we should do to solve them. This is the season of political party conferences, and there will be lots of speeches in which the powerful and influential stand up and tell us the answers – or what they think the answers are.



But I wonder whether this is a particular helpful exercise? On most of the big issues facing our society and our world, there is room for a variety of approaches and a variety of answers. What we need to do is to create a space in which different answers can be proposed and discussed – a space in which we can listen to a variety of perspectives and lived experience. Furthermore, we need to create a space in which we can think carefully about the ways in which we are framing the questions which we are asking. Are we actually asking the right questions? Much time can be wasted discussing the wrong question.

So the model I think is best for these purposes is not the model of a public lecture, where the designated expert stands at the front and everyone duly applauds at the end of their speech. Rather, the model which I think is best is that of a group of people sitting around a table, listening respectfully to each other and sharing individual insights and experiences. This conversational model allows a variety of expertise to be brought to bear on an issue. For such a group to work, it needs an effective and facilitative chair. But when it is well-chaired, I think the conversational model is the best way to tackle complex issues. Of course you may disagree, and that's absolutely fine!

In the spirit of this conversational approach, you may notice that I am hosting a series of short discussions about the Christian Faith. They will take place at the Benefice Centre in Blewbury on Sunday evenings between 7.30pm and 8.30pm, starting on Sunday 8th October. They will run for 4 weeks, and will provide an opportunity to discuss key areas of Christian belief. They are designed for anyone who would like an opportunity to discuss what Christians believe, in a gentle and informal context. Everyone is most welcome - whether you believe in God or not!

- Father Jason



Outdoor Church - Celebration of animals 8th October, 3pm Blewbury Playclose



Pets welcome!

A time for all ages to praise God as we focus on our wildlife, farm animals and pets at home
Some chairs for older people available. Please will families bring rugs
All Welcome!

A collection will be taken for Blewbury-based Oxfordshire Wildlife Rescue

Food Bank Collection

29 September – 9 October



Donations for the Didcot Emergency Foodbank can be dropped off at the Old School House between the dates above or at the Post Office anytime. You can also donate at both Sainsbury's branches in Didcot.

They need:

- Tins of meat / fish / potatoes / carrots / peas / soup / fruit / puddings
- Jars of pasta sauces / jam / peanut butter / coffee (small)
- Packets of pasta / rice / packets dried potato / breakfast cereals / biscuits / treats / tea
- Cartons of long-life milk / long-life juice / hot chocolate
- toiletries, toilet rolls, & clothes-wash items.

NO alcohol, razors, medicines, or homemade preserves. **Your generosity would very much be appreciated!** Many thanks, St Michael's Action Group

Dreaming of Africa?

We offer bespoke self-drive or guided journeys to South Africa,
Namibia, Botswana and Zimbabwe.

We donate 100% of our profits to African educational institutions.

Founded, owned and operated by a Blewbury resident.

www.wheretailbegan.co.za

Personalised. Ethical. African Journeys



JACKIE'S CARE

Warm and friendly self-employed carer available. Experienced in dementia and complex care need.

Services include: • Support with medication • Personal Care • Meal Preparation • Companionship • Supporting clients to live independently in their own homes

Hours: Monday to Friday 9am - 8pm

Hourly rates between £18-£20 depending on the level of care clients require.

Email angelheights16@yahoo.co.uk

Mob 07712 455093

Shaun Guard TV & WIFI SERVICES

- **Aerials** - supplied, repaired & poor reception solved
- **Satellite** - Sky Q dish upgrades, discreet dish installation
- **Internet** - black spots cured, internal & external data cables installed
- **TVs** - hung on your wall or set up & tuned



OXFORD AERIALS

www.oxfordaerials.co.uk shaun@oxfordaerials.co.uk

Call Wallingford 01491 833282



MC Property Solutions

0774 624 1284

**Extensions • Renovations • Kitchens
Bathrooms • Carpentry
And all associated building works**

Instagram @mcpropertysolutions

Email mcpropertysolutions1969@gmail.com

HIGHWOOD JOINERY

**Building/fitting bespoke kitchens,
home offices, wardrobes and storage**

Daniel Austin

T: 07547 704797

E: highwoodjoinery@hotmail.com



**JAZZ & J
Services**



- Garden clearance
- Strimming
- Hedge cutting
- Mowing
- General building maintenance
- Decorating
- Hardwood flooring (installation & maintenance)

Based in Blewbury

07818 665440

james.bvestate@gmail.com

GARDEN MACHINERY SERVICING & REPAIR



Everything from strimmers
and chainsaws to push and
ride-on mowers



Based in Blewbury

Contact James Brown

07818 665440

james.bvestate@gmail.com



secure
pest management

- WASPS & ALL INSECTS
- RATS, MICE, MOLES & SQUIRRELS
- **PROMPT SERVICE**

MARK DEARLOVE
(01491) 833282
07446 377816



BLEWBURY VILLAGE SOCIETY

As we write this, we are getting ready for the Clubs and Societies day on 24 September. A large number of clubs and societies will be represented, and we thank them for their enthusiasm in supporting this event. We hope there is something from everyone – whether newcomers or Blewbury stalwarts. We're sure the complimentary tea/coffee and homemade cakes will also go down a treat!



Fireworks Night, Saturday 4th November

The BVS Fireworks Night is back this year on Saturday 4th November, in Tickers Folly Field. We have a spectacular firework display planned, and the bar and baked potato stalls will be back, under our beautiful new marquee. Gates will open at 6:00 pm, the bonfire will be lit at 6:30 pm and the fireworks will start at 7:00 pm. Entry is £5 for adults and £2 for children – cash or card accepted (card preferred). The entry fee includes a baked potato.

We will have the usual wood collection for the bonfire with a small collection fee. We are working on transport, but spaces may be limited, so please email blewburybvs@gmail.com or phone Caroline on 07790 566754 if you would like your address to be included on the rounds. We politely request that you only put out reasonably clean firewood and remove as much metal and plastic as possible.

As always, we need lots of volunteers for this event, in particular with wood collection and potato baking beforehand, and with setup and refreshment serving on the night. If you can help, please email us at the BVS email address above. We'd love to hear from you!

Dates for your diary

It seems a long way off, but December is always a busy month, so don't forget to put the regular Blewbury events in the diary: Santa's sleigh on Christmas Eve (24th December) and the annual Boxing Day walk (26th December). More details to follow.

Jeff and Peter's Music Quiz

Blewbury Village Hall



Saturday 11 November, 2023

Quiz begins 8pm PROMPT



Tickets £10 from Blewbury Post Office

Hall and bar open from 7.15pm

Please support the bar. Monies raised will be donated to activities for young people in the village.



HALLOWEEN AT 11 LONDON ROAD

No. 11 London Road will be doing a Halloween display this year with jumpscare, theatrics and flashing lights to raise money for Oxfordshire Wildlife Rescue based in Blewbury. A donation box will be at the end of the drive for even the smallest of donations and for the people that don't fancy braving the walk down to get a sweet treat.

Feel free to bring family and friends if they dare!!

And join us for some spooktacular fun!!!



**FIXED SEATING
FIXED UPHOLSTERY
VEHICLE UPHOLSTERY**

FREDDIE QUEK-RICHARDS

Experienced Upholsterer

07527 824219

freddiequek-richards@hotmail.com

ALLO TAXIS DIDCOT



Allo Taxis Didcot and South Oxfordshire provides transfers to major airports and ports in the UK, including Heathrow • Gatwick • Birmingham. Luton • Stansted • Bristol • Southampton port Dover port and others in very competitive price.



www.allotaxididcot.com

Call: 01235 603055

Email: allotaxibooking@gmail.com



MOSSINATOR®
ROOF CLEANING SYSTEMS

**Moss Removal & Roof Cleaning
Brickwork Cleaning
Patio & Driveway Cleaning
Solar Panel & Skylight Cleaning
Installation of Bird Protection**

Enhance the appearance of your property with our quality assured, friendly service

01865 362797

info@mossinator.co.uk

WOULD YOU LIKE TO ADVERTISE IN THE BULLETIN?

Find out how at
[http://blewbury.co.uk/
contact/advertising/](http://blewbury.co.uk/contact/advertising/)

S. C. Huart

B.Sc Grad., Dip. Phys., S.R.P., M.B.Ac.A., L.C.H.

Chartered Physiotherapist, Registered Acupuncturist, Licensed Homeopath

at New Haven Clinic Blewbury
Muscleoskeletal, Arthritis, back pain,
sports injuries, headaches and stress,
fertility a speciality. For all the family's
painful healthcare needs,
phone **01235 850399**



WALTERS ELECTRICAL SERVICES

DOMESTIC
COMMERCIAL - INDUSTRIAL

24 hour emergency call-out
All types of electrical work, no job too small

Tel: 01235 817384



BLEWBURY HAND CAR WASH

Operated by Spike Enterprise Ltd

	Car	4x4
Bronze (Outside only)	£10	£15
Mini-Valet (Outside & Inside)	£20	£30
Gold (Exterior & Interior Valet) ...	£40	£40
Platinum (See on-site notice)	£80	£80



Shell Garage, London Road
OPEN 7 DAYS Mon-Sat 9am-6pm
Sun 10am-6pm



Blewbury HAND
CAR WASH

For bookings call 07988 801483 or 07455 225550

ARE YOU STILL WAITING FOR THAT ODD JOB TO BE DONE?

TOO BUSY OR CAN'T DO D.I.Y.

Call Alan!

Alan Clark – Tel: 01235 851168

All work undertaken. No job too small.
Painting, Decorating, Tiling,
Laminate Flooring, General Maintenance

ANIMATED CLEANING COMPANY

Domestic cleaners making life easier.

Fast, reliable and safe.

Insured.

DBS checked.

Call Jordan on: 07731 374871



www.facebook.com/Animatedcleaningcompany



Our Services

Our wide range of wellness treatments will ensure a healthy lifestyle, less stress, better productivity, stronger, immune system and more



LUMINATE

- Lymphatic drainage
- Holistic facials
- Massage
- Skin tightening
- Oncology treatments
- Energy healing
- Pregnancy treatments
- Infrared sauna
- Meditation
- Hypnotherapy
- Nutrition and fitness
- Spa packages

luminate-wellness.co.uk
Becky - 07870 849351
luminatebarn@gmail.com

Ivy Barn, Main Street, West Hagbourne OX11 0ND

Blewbury Honey



NON-BLENDED, NATURAL HONEY PRODUCED IN BLEWBURY
TO ORDER CALL OR TEXT MATT ON:
07817 955 205

Milton Garden Machinery Ltd

40 years of repairing, servicing and selling all types of garden machinery

We repair all types of petrol and battery driven machinery. New and used garden machinery for sale. Demonstration area.
Delivery & collection service available.

Main dealers for: Alko, Atco, Briggs Stratton, Countax, Cub Cadet, Echo, Efco, Hayter, Lawnflite, Mitox, MTD, Murray, Toro, Westwood, Wheelhorse. We repair Stihl and Honda machines too.

We are always busy, but never too busy to have your machine ready within 7-10 days

Mon-Fri: 9.00am-4.00pm | Sat: 9.00am-12.00pm
Windyridge Farm, Milton Road, Abingdon OX14 4EZ
T: 01235 555115

E: paul@miltongardenmachinery.co.uk
www.miltongardenmachinery.co.uk

The Caucasian Chalk Circle – July 2024.

A gem of a play. This is full of action, humour, music and emotion. One of Bertolt Brecht's most celebrated plays - a wonderful story performed by a gang of actors - in a new translation. We are pleased to announce that the production for July 2024 will be The Caucasian Chalk Circle by Bertolt Brecht, directed by Erica Harley. Erica has previously directed The Taming of the Shrew and The Visit for the Blewbury Players.

Friday October 6th 7.30 pm at the Melland Room

Erica will be telling us about the Play and her vision for this production. **This is an open invitation** for anybody interested taking part in performing or non-performing roles.. For now, here is a little more about the play...

A play within a play, some farmers are arguing over land and who should be in control of what happens to it. They are interrupted by a group of singers and actors who come to perform a play. The story is about a young maid, Grusha who is caught up in a rebellion and finds herself caring for the son of the Governor's wife, who has fled with her best dresses, but forgotten her son. Grusha has to flee to protect the child and goes through a number of trials, ending up being judged by a seemingly unscrupulous judge when the real mother returns to claim her child in echoes of The Judgement of Solomon... who will win?

There are 60+ characters so we are looking for a cast of up to 25 to cover them all!!!!"

Please contact us at blewburyplayers@gmail.com if you want to ask more, especially if you can't come along on the 6th October. For details of the chosen script see www.blewburyplayers.co.uk

It's nearly time to assemble your team for ...

Jeff and Peter's Music Quiz – Saturday 11 November

This ever-popular Music Quiz has questions for all ages and all types of music. Big and small teams welcome. Maximum size 10. Loads of lovely prizes, including a wheelbarrow of wine!

Tickets are £10 and available from Blewbury Post Office. Hall and Bar open from 7.15pm. Quiz starts at 8pm.

Please support the bar because monies raised will be used to support activities for young people in the village.



LETTER FROM DAVID JOHNSTON MP

I was honoured last month to be appointed the Minister for Children, Families and Wellbeing. It's particularly special for me to be placed in the Department for Education given my pre-politics career was spent running organisations for children and young people. It often surprises people when I tell them that, before I became an MP, I had never been in politics before, whether as a councillor, advisor, or candidate. In my new role I have responsibility for a wide range of areas such as early years and childcare – including the delivery of the Government's new commitment to provide 30 hours a week free childcare from when a child is 9 months old until they start school - as well as Special Educational Needs and Disabilities (SEND), children in care, adoption and kinship care – vital areas that help support some of our most vulnerable young people - not to mention mental health. I am delighted to have the opportunity to work on giving children across the country the best start in life.

It was also a delight to attend the unveiling of the new Agatha Christie statue in Wallingford, a place she lived for 42 years. The architect has done a really great job and it was a pleasure to meet her grandson, Matthew, who did the actual unveiling. I recommend a visit to see it when you have time!

Some other recent visits made by me included meeting with a group of unpaid carers in Wallingford, facilitated by Val Wolsey and Carers Oxfordshire, to talk about their experiences and listen to their concerns, attending an Innovator Day at Harwell Campus where I gave a speech and talked to staff and investors about the world-leading work that Harwell is doing, and visiting SeeAbility in East Hagbourne who provide support services for people with learning disabilities, many of whom have sight loss.

I have been campaigning to see Grove Station re-opened since I was elected nearly 4 years ago and have now launched a petition of Parliament. This is something MPs can do on matters that are important to their constituents and I've done so to keep the pressure up. I am delighted that 1,750+ people have signed so far and the more signatures we collect, the stronger the message we send to the Department for Transport – so please do sign if you are able to and encourage your friends and family that live in the constituency to do so too. You can sign on my website at: www.david-johnston.org.uk/GroveStation.

If you read this in time, do attend or spread the word about my Pensioners' Fair at the Beacon in Wantage on Wednesday 27th September from 12:30pm to 4:30pm. I am grateful that so many local and national organisations will be in attendance including the Department for Work and Pensions, Age UK Oxfordshire, Barclays Bank, My Vision Oxfordshire and Vale Community Impact. Details on my website www.david-johnston.org.uk/PensionersFair. As ever, if I can help with anything then do please get in touch via david.johnston.mp@parliament.uk.

NATURE NOTES

Go to the ant, thou sluggard, consider her ways and be wise: Which having no guide or overseer, or ruler... Proverbs 6:6

Ants are one of the most successful animals on our planet, with an estimated 10,000 trillion ants walking this earth on any given day. They have a long history as role models for society and have been admired through the centuries for their independent spirit, intelligence and caring nature. Aesop admired the ant's ability to harvest and store food to see it through lean times, compared with the profligate Grasshopper. Plato was exasperated ants could lead such complicated social lives without the need for any philosophy. In modern times they have been the inspiration for books (*Empire of the Ants*, H. G. Wells, 1905) and many a 1950's sci-fi B-movie: *Them!* is a great example of the genre.

In the UK we have 51 species of native ant with a further 13 non-native species. Ants are very closely related to the Bees and Wasps; they are all in the order *Hymenoptera*. At first glance this seems incongruous. But they share several characteristics. They are social and divide labour, they communicate through chemical signals, and they can all administer venom. In the case of ants this is formic acid. Remember, ants can fly as well. However, they only develop wings when the colony is ready to grow. 'Alates', winged male drones and virgin queens, (known as princesses) are produced. They mate (often on the wing in a nuptial flight) and then disperse to found new colonies. This process is very weather dependent. Swarming both aids reproductive chances and overwhelms the myriad of predators trying to exploit this abundance. Queen ants can live up to 15 years, an extraordinary long time for an insect.

In the left-hand corner of Lids Bottom, as you walk up from the village, you will find many humps and bumps. These are the work of the tiny Yellow Meadow Ant (*Lasius flavus*). The plentiful workers are around 4mm in length, the queen larger at around 8mm. The anthills are big, a testament to both the hard work of the ants, perhaps over a hundred years, and the pasture never to have been ploughed (it has a very steep gradient!). There may be up to 40,000 ants in these mounds, which can extend a metre below the surface. The ants stay underground, feeding on the honeydew of root aphids, with which in effect they 'farm'. The anthills create the perfect conditions for certain plant species, such as wild Thyme. This is a favoured nectaring plant of the Chalkhill Blue (*Polyommatus coridon*). Both the larvae and pupa of this butterfly secrete an irresistible cocktail that the ants ingest and often they will carry them underground to keep them safe in a special chamber. *Glen Meadows*

STUNNING NEW DEVELOPMENTS AT BLEWBURY SCHOOL!

The new school year is now fully underway at Blewbury School and that has heralded several changes and developments. Featured in our photograph is the outside of the O'Keeffe Reception Classroom, which has had a major revamp over the summer holidays. Two sets of new patio doors have been installed leading straight out onto an AstroTurfed play area. This is excellent and has already been much appreciated by the sixteen new reception children who moved into the school and this classroom at the start of term.



We are very excited to have the presence of this vibrant and enthusiastic intake, which is bigger than we have had for several years. Now is also the time to start anticipating the cohort who will follow in their footsteps in September 2024. If you have, or know of, children, who will be starting school then please be sure to make a visit to one of **our special introductory sessions on Tuesday 7th November (9:30 – 10:30am) and Thursday 9th November (9:30 – 10:30am and 5:00 – 6:00pm)**. These will include a tour of the reception area, seeing the current class in action (morning sessions only) and an opportunity to meet the class teacher, teaching assistant, headteacher and other staff members and school governors.

New staff appointments in the School this September have included three teaching assistants (Miss Penny-Dance, Miss Rawson and Mrs Pithie) and our new Assistant Headteacher Mr Sam Coleman.

So, unlike some other unfortunate schools around the country, our village school is in fine shape and it has already launched itself into the exciting year ahead. *Roger Murphy, Community Governor*

BLEWBURY CLIMATE ACTION

What are we doing about Climate Change: Repair Cafes

We held a very successful Repair Café on 17th September – 100% of items were sharpened or successfully repaired. This is important as a service for the local community and saving them the cost of a professional repair, but it is also important in helping to avoid items being thrown away and replaced. Incidentally, the most common vacuum cleaner repair is to empty the tubes as well as the bag.

I'd like to publicly thank Peter, Ron, John, Alex, Andrew, Karen, Eric, Jane, Kathy, Mary, Flavia and Henri for regularly volunteering, and a special thanks to Clive and John, Craig and Giles, who come from afar to fix bikes, clocks and sharpen. Last year a total of 151 people benefitted from repairs and sharpening ... and tea and cake!

What else are we doing about Climate Change?

I could summarise by saying "not enough", but it is not always that simple.

Climbers draped Rishi Sunak's mansion in an oil-black fabric to protest against new oil when the government announced that they will continue handing out new oil licences, and hundreds of climate activists marched through Edinburgh to demand a quick and fair transition to renewables. They wanted to stop fossil fuels being extracted from Rosebank – the UK's biggest untapped oil field, capable of producing up to 500 million barrels of oil. UK taxpayers will foot 91% of the development costs, and oil companies will reap the profits. (*stv news, Greenpeace*)

And shortly after BMW Oxford announced that they will launch nine new electric cars by 2025, it was announced today (20th Sep) that the ban on new petrol and diesel cars will be pushed back to 2035; the phasing out of gas boilers will be delayed; plans for taxes to discourage flying ditched; recycling schemes cancelled. Caroline Lucas wrote in the Guardian today that this has united Green MPs and car manufacturers against the proposals. (*Autocar, 350.org, Guardian*) I am confused: too much to absorb quickly. *Jo Lakeland*

VILLAGE CAROL CONCERT – WEDNESDAY 13th DECEMBER – ST MICHAEL'S CHURCH – STARTS 8pm

Plans are going ahead for our Village Carol Concert – please note the date – Wednesday 13th December.

All details in next Bulletin about how to take part in the ad hoc orchestra which will again be conducted by our professional conductor Richard Blackford ; the Brass Band will be there and St Michael's Church Choir plus Blewsing, the Ukrainian Choir, Blewbury School and the new Family Choir – a feast of Choirs, Carols and Christmas readings. Lots of great Carols for all to sing – the usual format. A wonderful event which heralds all Christmas Festivities.

VALE OF WHITE HORSE DISTRICT COUNCIL UPDATE



Hello from Hayleigh and Debra!

August is a strange month for the council, things slow down as officers and councillors take their summer holiday time and children are off school. We've still been busy responding to queries from residents and parish councils. We've had a number of queries about planning applications over the summer, that we've helped with, including calling one application into planning committee after concerns from residents and parish councillors. Debra has been responding to queries about the Abbey Meadows Outdoor Pool in her role as cabinet member for Leisure Centres and Community

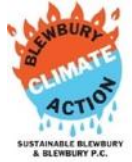
Buildings, and has been digesting the details of the energy audit taken at the pool, to assess whether it could be made more energy efficient and thus reduce the running costs. September, by contrast, is a very busy month. We have a briefing to update us on the status of the Valley Park planning applications, we have five parish council meetings to attend, and a briefing on the waste contract, as well as our individual council commitments.

We have continued to push for updates on the Great Western Park Health Centre. For the latest information we have been permitted to share, please see page 1.

Have your say on our landscapes and what's changing them: A new study has launched to better understand, protect and enhance the unique landscapes across South Oxfordshire and Vale of White Horse and you're invited to have your say. For more information see the Vale of White Horse District Council (VOWHDC) website. The Consultation Hub is open for comments until 29 September 2023

Silver screen Saturdays at the Beacon: This Autumn, Cinema at The Beacon returns with a variety of new films. Showing first on the big screen is 'Are you there God? It's me Margaret' on Saturday 16 September, see the movie adaptation of Judy Blume's classic novel, starring Rachel McAdams and Kathy Bates. And don't miss October's film 'The Unlikely Pilgrimage of Harold Fry' on Saturday 7 October.

Community Hub: The Hub can offer support and direct people to help on a range of things including Cost of Living, food support, etc. If you are struggling financially or just finding life difficult, the community hub can help. Whether it's practical support or just advice, please get in touch at communitysupport@southandvale.gov.uk or on 01235 422600. Office hours are 8.30am - 5pm Monday to Thursday, 8.30am-4.30pm on Fridays (closed on bank holidays)



FROM OUR CANADIAN CORRESPONDENT

We are having a wonderful year for apples, and I decided that we should celebrate by having an Apple Day at the Riley Park Community Garden, where I volunteer, on October 1st. Thanks to many years' experience with Sustainable Blewbury, I know the drill! The difficulty has been sourcing the equipment and organising volunteers to help set up, man the equipment, prepare apples for juicing and most importantly, clear up afterwards. My former colleagues will empathise!

We don't own any of the necessary equipment, but there is a wonderful organisation here called the Tool Library which hires out a multitude of tools to cover every eventuality for a small fee, so I have arranged to borrow their apple press, which conveniently comes with a small hopper/shredder on top of it, all attached to a robust wooden frame. I hired this kit last weekend to give it a quick run through and make some cider with apples and some rhubarb already given to us. It's bubbling away as I write this! Unlike the wonderful Shark machine in Blewbury, this one is very Heath Robinson! The hopper is made of rigid acetal resin, inside of which is a rotating drum studded with screws, with a handle for turning on the side. This is quite hard work, but is human-powered! Hopefully we will have lots of eager volunteers on the day. We are encouraging local residents to bring their apples for juicing and, as in Blewbury, bring their own bottles to take away juice or have it pasteurised for future drinking.

In addition to making juice and hopefully cider, we will also be demonstrating our dehydrator, which has ten trays on which thinly sliced apples, plums or pears are placed and left overnight in low heat and make delicious healthy snacks! We have been selling these in small bags to raise funds for the refurbishment of the Neighbourhood House, which suffered a catastrophic fire recently. There will also be a short talk by a local cider firm that gets all of its ingredients from people's back gardens! In addition my daughter will be manning a table selling other apple products we have made, including apple butter, apple chutney, and spiced apple cake (maybe served with a glass of mulled apple juice if the weather turns nasty). I am also experimenting with making apple cider vinegar using the leftover "pomace" – apple pulp! It's going to be a very busy day!

(This is part 1 of a two-part article – more next month!) **ANGELA HOY** (angelahoy23@gmail.com)



DIDCOT & DISTRICT UNIVERSITY OF THE THIRD AGE

D&D U3A meetings are held on the third Tuesday of each month at 2pm at Didcot Civic Hall. Visitors are welcome to come to one meeting as a taster before joining. On 17th October **Richard Blair** will give a talk on **George Orwell**. For details email chairman@didcotu3a.org

or seretary@didcotu3a.org or visit www.u3asites.org.uk/didcot.

BLEWBURY CALENDAR 2024

Bernard's Blewbury Calendar with full colour photographs of Blewbury scenes and events and lots of space for writing your appointments, etc. will be on sale from the middle of November at Blewbury Post Office or ring Bernard Mattimore to reserve and we will deliver 01235 851088 bernardmat@btinternet.com. **Price £8.** A lovely gift or treat yourself. Thank You

NORTH MORETON BOOK SALE

The North Moreton book sale will be held on **Saturday 28th October**, 10am until 3pm in the Church. As usual, thousands of books will be on sale, with all proceeds going to support the hall and church. Tea, coffee and homemade cakes will be available. *Free entry and car parking.*

Donations are very welcome. Email northmoretonbooksale@gmail.com or call 01235 818900, or 07908 314771 if you have any books to give, and the organisers will happily collect them in the few weeks before the sale.



BLEWBURY PRE-SCHOOL

Did your children come to our lovely village Pre-School? Perhaps you were one of our pupils? Would you like to help in raising funds for an incredibly worthwhile charity? We need fresh ideas and helping hands to raise at least £7000 to stay open each year. Could you join a 'Friends and Funds' group to plan some fun initiatives and events for the village to get involved in OR join our management committee?

Please pop in to Pre-School to chat to Tracey Edwards, Sharon Phillips or Kirsty Cheswick or phone 01235 851786 any weekday morning or email us on: preschool@blewburypreschool.co.uk. We would love to hear from you.

Our AGM will be held on Thursday 12th October from 3.30 - 4.30pm at Blewbury Pre-School. Refreshments will be available. This will give everyone an opportunity to hear how successful our Pre-School is in preparing children for Primary School and giving them a happy start in their early years education and all the lovely things we have been up to. Also, our annual statement of accounts will be available. We look forward to seeing you.

PARISH COUNCIL

Notes of the Blewbury Parish Council meeting held at 7pm on **Wednesday 13 September 2023** at the Melland Room, Blewbury Clubhouse.

Present: Dermot Mathias (chair), Sheila Austin, Andrew Calder, Jane Gibson, Lydia Inglis, Anne Millman, Lee Robinson, Julia Saunders and Mark Shayler. Also present Elizabeth Cooper (clerk), David Hollick (lengthman), Jill Ingoldby (Speed Watch team), district councillors Hayleigh Gascoigne and Debra Dewhurst. Apologies were received from county councillor Sally Povolotsky.

Speed reduction measures update

New road roundels and larger repeater signs have been installed on Bessel's Way. The new Speed Indicator Device (SID) poles have been put in by OCC and the PC is planning to put up the SIDs as soon as possible.

Update from the Vale on Great Western Park GP services

The Buckinghamshire, Oxfordshire and Berkshire West Integrated Care Board (ICB) is responsible for healthcare services in Oxfordshire, including the Vale. The Vale is working to overcome a series of legal challenges that have caused delays in the ICB opening a health centre on GWP. There are outstanding issues to be resolved re the delivery of funding and leasing arrangements for the land/any future building. The ICB continues to work with Woodlands Medical Centre to expand their current facility in Didcot. For further updates please contact the ICB.

Local landscapes

SODC and the Vale are preparing a new Landscape Character Assessment and would like residents to share what they love about local landscapes and what they think is changing them. Have your say at: <https://bit.ly/3PLcNGS>

PLANNING APPLICATIONS

All Blewbury planning applications, decisions and BPC responses, including items under consideration, can be found in the 'Parish' section of the Blewbury website (www.blewbury.co.uk/parish/planning/), updated monthly. This also has links to the Vale's planning site, with full details and plans for all applications.

Responses to the District Council:

P23/V1943/HH 29 Bridus Mead Enclose existing porch, loft conversion with rear dormer and roof lights. BPC has no objection.

P23/V1825/HH Ashbrook House, Westbrook Street Proposed construction of an annexe tied to Ashbrook House. Blewbury PC has no policy-based objection, but asks that the case officer considers the following: the archaeological importance of the whole site; the importance of Ashbrook's large garden in maintaining Blewbury's rural character; the need for a condition that ties the annexe to the main house in perpetuity (and which cannot be overturned by a future application to remove this condition, as happened for P12/V0050).

Decisions from the District Council:

P23/V1430/LDP Barnwell, London Road Replacement of existing rotten timber framed windows with UPVC windows of a similar style, size and colour. Lawful development application (no consultation). Granted.

P23/V0446/LB Corrydon House, London Road Repairs to timber frame on the upper South East gable. Granted. Enquiries regarding planning in the parish may be sent to blewburypc@gmail.com

NEED TO CONTACT YOUR PARISH COUNCILLORS?	
Sheila Austin 3 Ladycroft Park	Anne Millman Brook Cottage, Church End
Andrew Calder Trefagus, Chapel Lane	Lee Robinson 6 Chailey Gardens
Lydia Inglis Chapmans, Nottingham Fee	Julia Saunders Charity School House, Church Road
Jane Gibson 5 Westbrook Green	Mark Shayler 2 Eastfields
Dermot Mathias The Old Mill, Berry Lane	Elizabeth Cooper (Clerk) 07968 772935 or blewburypc@gmail.com

The next PC meeting will be at **7pm on Wednesday 11 October** in the reopened Melland Room at the Clubhouse.



AGE UK OXFORDSHIRE – DIDCOT SILVER PRIDE

Our Silver Pride groups run across the county and offer support and friendship to our older lesbian, gay, bisexual and trans community (LGBTQ+). Our Didcot group provides a relaxed, safe space to meet and make new friends. Our meetings are very relaxed and no-one is expected to share any personal information they don't feel comfortable about. We

just have a chat about anything and everything over coffee and cake. Gaynor and I know that it can be daunting, walking into a group of people you don't know, so we would be happy to meet new members before their first meeting and accompany them in, if they would find that helpful.

When: Fourth Friday of each month 11am-12pm **Where:** Cornerstone Arts Centre, Didcot, OX11 7NE

Call: Kate 07827 235403 Gaynor 07785 425601 **Email:** community@ageukoxfordshire.org.uk

Web: www.ageuk.org.uk/oxfordshire

Autumn Leaves Dates for October 2023 Bingo sessions are: **October 10th & 24th** in the Vale Room at 2pm. For further information call Norman Webb (850700) or Cilla Maguire (851966). If anyone would like to join Autumn Leaves, please contact Norman or Cilla on the above numbers. We would welcome any new members.

Astons Online events for UK National Get Online Week 16 – 22 October

Monday 16 Oct 10:30am round table webinar using Zoom

Tuesday 17 Oct 10:00-12:00 in person roundtable discussion and 1:1 sessions in Astons Village Hall (OX11 9EQ.

Wednesday 18 Oct 10:00-11:30 digital help café and 1:1 sessions in Goring Library RG8 9HA (Free coffee & cake!)

Friday 20 Oct 10:30-11:30 roundtable discussion “Let’s be online without worrying” in Didcot Library OX11 8RU

See information at www.astonsonline.uk Register for events theastonsonline@gmail.com

FLYING SQUAD Number 07891 768197 If the Flying Squad telephone holder is not available, you will be put through to voicemail and you will hear a message which starts – ‘Hello, this is the Blewbury Flying Squad phone’ and you will be prompted to leave a message. Wait for the beep at the end of the message and give your name and telephone number and you will be phoned back as soon as possible. Please speak clearly. **Please note that the Flying Squad is a voluntary service that relies entirely on people’s personal time and vehicle availability, so we need as much notice as possible to arrange a driver.** Please also note that journeys to the Horton Hospital in Banbury are not available from the Flying Squad.

BLEWbury POST OFFICE OPENING HOURS

Mondays, Wednesdays, Thursdays: 9.00am – 3.00pm. Tuesdays and Fridays: 8.30am – 12 noon and 2.30 - 5pm.
Saturdays: closed.

VILLAGE DIARY for October 2023

				Page
Monday	2	9.30-11 am	Coffee & Kids!, Vale Room	7
Friday	6	9 am	Blewbury Song for Europe box office opens	3
Friday	6	7.30 pm	Talk on <i>The Caucasian Chalk Circle</i> , Melland Room	15
Sunday	8	2-4 pm	Apple Juicing, Blewbury Manor	7
Tuesday	10	2 pm	Autumn Leaves Bingo etc., Vale Room	20
Tuesday	10	7.30-9 pm	BlewShed meeting, The Shed, Recreation Ground	9
Wednesday	11	7 pm	Parish Council meeting, Melland Room	19
Thursday	12	3.30-4.30pm	Pre-School AGM, Blewbury Pre-School	18
Tuesday	17	4 pm	Blewbury Croquet Club AGM, Melland Room	7
Wednesday	18	7.30 pm	Deadline for November Bulletin – Swallows, Church Road	
Sunday	22	2-4 pm	Apple Juicing, Blewbury Manor	7
Tuesday	24	2 pm	Autumn Leaves Bingo etc., Vale Room	20
Wednesday	25	7.30 pm	WI Meeting and Talk: ‘My life and times as a film extra’, Vale Room	9
Sunday	29	5.30 pm	Jazz at Mockbeggars, Mockbeggars Hall	3

HOW TO ADVERTISE IN THE BULLETIN The Bulletin welcomes advertisements from organisations and individuals based in Blewbury and immediately neighbouring villages. Space permitting, we also welcome ads from further afield if they do not duplicate existing local services, are not widely advertised elsewhere and are likely to be of interest to residents. Acceptance of advertisements does not imply endorsement of the products or services offered. Display advertisements **must** be submitted in one of three rectangular sizes:

- 60mm wide x 40mm high (cost: £2.00)
- 60mm wide x 85mm high (£4.00)
- 90mm wide x 65mm high (£6.00)

Artwork should be in black and white only. You can also send plain text for us to fit into an appropriately sized box. If you are advertising a village event you can also present it as plain editorial, i.e. not highlighted in a box, for no charge. All advertisements should be submitted to the Editor in the first instance, either emailed to editor@blewbury.co.uk as a Microsoft Word, Microsoft PowerPoint, JPEG or PDF attachment, or typed/handwritten and delivered to **Swallows, Church Road, Blewbury OX11 9PY**. If your advertisement is accepted, payment **must** be received before the Bulletin goes to press. If you want repeat insertions over multiple months, you will be referred to the Advertising Manager to make the arrangements.

WRITTEN CONTRIBUTIONS We are always happy to receive editorial contributions, which can be submitted in the same way as advertisements – see above. We ask for a maximum length of 500 words (closer to 400 if there is an accompanying photo). Anyone supplying information for publication must be responsible for its accuracy. We require name and contact details in all cases, although if requested these will not be published. The editor reserves the right to reject submissions. Opinions expressed by contributors are not necessarily those of the Bulletin.

To see the Bulletin online visit www.blewbury.co.uk.

The Blewbury Bulletin is published at Swallows, Church Road, Blewbury, OX11 9PY. While every effort is made to ensure the accuracy of published information, the Editor and Officers accept no responsibility for the consequences of any errors. **Problems receiving your Bulletin? Call 01235 850337.**

Editor: Chris Whatmore, Swallows, Church Road, OX11 9PY tel 851055 editor@blewbury.co.uk. **Local Distribution Manager:** Kathy Edmunds, Wayside Cottage, Westbrook Street, OX11 9QA tel 850337 kathy_edmunds@btopenworld.com **Postal & Email Distribution Manager:** Helen White, Southbourne, Bessels Way, OX11 9NJ tel 850483 mail@daisyh.net **Advertising Manager:** Elizabeth Murphy, The White House, London Road, OX11 9PD tel 851244 elizabeth.murphy52@gmail.com **Treasurer:** Rachael Richardson, Robinsons, Church Road OX11 9PY **Webmaster:** Peter Willison, Fleetwith, Nottingham Fee, OX11 9PG tel. 850936 webmaster@blewbury.co.uk.