

THIS IS OUR VILLAGE - BLEWBURY

Issue 15, August 1966.

Blewbury has two children's playcorners, one at Eastfields which has swings, and one on the Recreation Ground with swings, a slide, a sand pit and climbing bars.

In a Village with 150 children under five however, more provision for childrens play may be desirable. The Eastfields playcorner could be improved and perhaps another playcorner established by voluntary labour using local materials. The National Playing Fields Association has published a diagram of suggestions for equipment of this type, and handymen could think of more. The suggestions include a construction of logs to climb over, a pipe tunnel, a climber pen or stockade, a plank-bridge and an old tree trunk.

Mrs. McCaldon and family, of 15 Eastfields, Blewbury wish to thank all relations, and friends and neighbours for sympathy and kindness shown in their recent sad bereavement, also for beautiful floral tributes. Please accept this as a personal acknowledgement.

Volunteers are asked to help tidy the Churchyard on the morning of the 29th August, Bankholiday Monday.

SPECIAL NOTICE The Football Club/V.P.A. Fete will open at 5.p.m. on Saturday July 30th at Parsonage Farm. (NOT at 3 p.m. owing to the final of the World Cup).

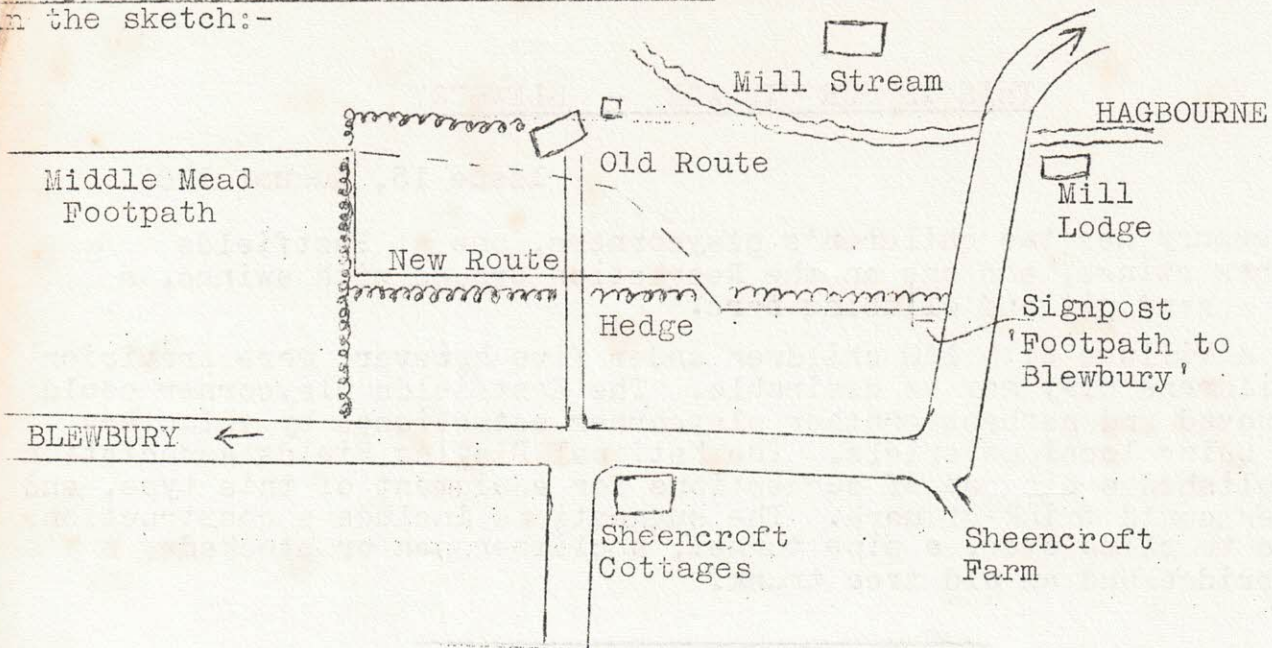
Mount Blewbury in Greenland? Two weeks ago Dr. Michael Hannam Key of "Applethorpe" Blewbury flew to Greenland to lead an expedition doing geological surveys, mapping and climbing.

Michael is celebrating the award of his Ph.D. in Physics from Imperial College, and his appointment as lecturer in Physics at Queen's College Belfast.

Three years ago a similar expedition led by him named 14 previously unclimbed peaks with London district names, this time they intend to use names of English villages.

Blewbury Stocks. The Stocks on the Pound are no longer in a fit state to receive vagrants and villains. As part of a campaign to repair them (for their historical and local interest?) Mr. Edger of Concord, South St. would be grateful for information of any photograph or picture showing their original form.

Footpath 20 - the Middle Mead Footpath has been diverted as shown in the sketch:-



Circus on the Recreation Ground. A small circus was set up on the recreation ground for the afternoon and evening of Thursday 14th July.

The Rubble Pit became the scene for science fiction last weekend, as fearful happenings were filmed for a BBC drama 'Out of the Unknown - The Machine Stops', under producer Philip Saville.

Meanwhile on Blewburton a party from Reading University are undertaking an archaeological dig.

The Parish Council met on Tuesday 19th July.

No Cycling Signs. A sub-committee of the County Council toured the Village and decided that the No Cycling bylaw should not be rescinded in the interests of safety. However they agreed that the signs were out of place in a Village and asked the Highways and Bridges Committee to design a more pleasing sign which they will then attempt to substitute, taking this up nationally if necessary.

Cervical Cytology. The County Medical Officer has rejected the suggestion that a Cervical Cytology clinic be set up at Didcot. This test is available at a clinic in Wallingford, and from local doctors. The Parish Council thought that the importance of this test should be more widely publicised. In this country about 3000 women die each year of Cervical Cancer most of whom would be saved by an early diagnosis by this test.

The New A34. The County Councillor, Mr. Price, outlined the new line for A34. It will bypass Abingdon and Drayton to the west, and then cross the present road to run east of Steventon and the Rowstock Crossroads.

Allen Scythe. Would anyone prepared to lerd an Allen Scythe occasionally for cutting long grass round the Village please contact Mr. Edgar, Concord, South St.

No Parish Council Meeting was fixed for August.

Garden Contractors.

Lawns, Hedges, Fencing, Flower Beds.

E. F. KERIN,

1, Eastfields. Tel. Blewbury 543.

J. COLIN.

Painting, Decorating, and General Repairs.

"Downside", Westbrook Street,
Blewbury.

J. SNOOK. Blewbury 313.

Large quantities of second hand timber.

Bales of hay and straw. Manure.

Good prices paid for old coins.

JULIE AND DANNY CARTHY
welcome everyone to

THE BARLEY MOW

A Charrington House.

M. STREET & SONS - Your local coal merchants and haulage contractor.

Also agents for evening papers.

For prompt and personal service ring

Blewbury 225.

R. F. PRIOR & SON - THE STORES
BLEWBURY

Open 8.15- 1 p.m. 2.15- 5.30 p.m.
Saturday 8.15- 1 p.m. Tel. 284.

Grocery and provisions, knitting wool,
agents for dry cleaning, printing and developing.

G. BILLINGE -

High class family butcher.

The Shopping Centre (A.E.R.E.)

Harwell. Phone Rowstock 324.

Deliveries in Blewbury -

Tuesday, Thursday and Saturday.

SPIRELLA

Made to measure Foundations, swimsuits,
slacks, skirts and tops with colour
matched sweaters and blouses.

JOYCE MARFLEET "Ambleside",
Didcot Road, Blewbury.

Phone: Blewbury 394.

For personal service and advice
for all forms of insurance.

MR. L. A. WEST,

Orchard Road,

Westbrook Street.

Tel. Blewbury 214.

E. SAWYER (N.A.F.D.)

Funeral furnisher, Cremations arranged.
Memorial and marble stones erected.

Day and night service.

75 New Road, East Hagbourne.

Tel. Didcot 3175.

THIS IS MORLAND
COUNTRY !!
DRINK THE BERKSHIRE
BREW AT
THE MISCHIEF.

MARY RITCHIE and JOY DUGDALE.
For antiques, modern pottery
and Pictures.
Also presents - Come and look.
Open daily 10-12.30 p.m. and 2 - 7
Closed Monday and Tuesday.

CENTRAL STORES

Church Road, Blewbury. Tel 224.
Daily deliveries of groceries,
provisions, fruit & vegetables,
hardware, paint, paraffin,
chemist sundries.
Agents for Boffins Bread.
Dry Cleaning. Shoe Repairs.
Webbs Seeds.
(A.K.Woodward)

W.E. White & Son.

Purveyors of first quality meat,
have a special interest in
Blewbury, having lived here for
30 years. For personal attention
ring Didcot 2258.

Deliveries, Tues.Wed.Fri. and Sat.

ANN - Ladies Hairdresser.
Open Tuesday to Saturday inclusive
Tel. - Blewbury 201.

E. Richardson.

Builder and Woodworking
Contractor.

Orchard House,
Bessels Lea.

Tel. Blewbury 219.

BLEWbury SERVICE STATION
S.W.W. Smith.

For petrol, oil, grease, tyres,
etc. Cigarettes, sweets and
ice cream.

Open Sundays. Phone 201.

WANTED FOR EXPORT.

Old fashioned furniture, antiques,
silver and valuables of all kinds.
High prices paid. Enquiries
invited.

P.C. Key. "Applethorpe",
London Road, Blewbury. Tel. 366.

EDITORIAL COMMITTEE

P.W. Bartlett, 19 Eastfields
(Services)

R.S. Cambray, Great Tree 419
(Societies)

G.D. Edgar, Concord, South St.
(Advertising)

J.M. Richards, Healmwic Cottage
218 (General Editing)

The Church Fete was held at the Manor on Saturday June 25th by kind permission of Dr. and Mrs. R. Kauntze. It was washed out however by a deluge of rain an hour after the start and was resumed on Monday evening. The sum of £200 was raised for Church Funds. The tug of war was won by Mr. Corderoy's team and as a result they have received a challenge from a team from Harwell, to be fought out on the Pound.

A Raffle Prize, a bottle of Whiskey, was not claimed.

Please will the owner of ticket A 2279 No. 169 contact Mrs. Dykes at the Post Office.

CHURCHES

Blewbury Parish Church - S. Michael's. Vicar: Rev. H.J. Pickles.
The Vicarage, Church End. 267.

Sunday Services: 8.00 a.m. Holy Communion.
9.30 a.m. Family or Parish Communion.
11.00 a.m. Matins and Sermon.
3.00 p.m. Family Service for Parents & Children.
6.00 p.m. Evensong and Sermon.

Other Services as detailed on Church Notice Boards in the Church Porches.

Sun. 7th Aug. Parish Communion at 11 a.m. No Service at 9.30 a.m. Those who normally go to the 9.30 Communion Service are invited to join the Vicar at the 9.00 a.m. Service at Upton.

Sun. 14th Aug. 6.00 p.m. Evening Prayer at Blewbury.
6.15 p.m. Coach leaves Old School.
6.30 p.m. Patronal Festival at Upton.

Methodist Chapel - Minister in Charge: Rev. J. Barrett. 22 Mary's St Wallingford.

Sunday Services: 11.00 a.m. Morning.
6.00 p.m. Evening.

Roman Catholic Churches

Parish Church - English Martyrs. Manor Crescent, Didcot.

Parish Priest: Rev. H. Henry, 15 Manor Crescent, Didcot. 2338.

Services: Sunday Mass 8.00 and 10.00 a.m.

Evening Mass 6.30 p.m.

Holy Days Mass 9.0 a.m. and 7.30 p.m.

Weekday Mass 9.0 a.m.

Confessions Saturday 11 a.m. and 6.30 p.m.

A bus leaves the Barley Mow at 9.45 a.m. each Sunday for 10 a.m. Mass. For further information apply C. Norton, 20 London Road.

Adjacent Churches:

East Hendred - St. Mary's. Sunday Services, Mass 8.30 and 10.30 am.

Wantage - St. John Vianney. Charlton Road. Sunday Services, Mass 8.00 and 10.00 a.m. Evening Mass 6.30 p.m.

Wallingford - St. John the Evangelist, Market Place. Sunday Services Mass 8.30 and 11 a.m.

Goring-on-Thames Our Lady and St. John. Ferry Lane. Sunday Services, Mass 8.30 and 11 a.m.

BRITISH LEGION BLEWBURY & UPTON BRANCH

EVENING FETE & BARBECUE

AT

PARSONAGE FARM, BLEWBURY

(By kind permission of Mr. & Mrs. Taylor)

from

6.30 p.m. to 10.00 p.m.

on

SATURDAY, 27th. AUGUST, 1966.

BAR (Licence applied for) - MUSIC - HOT-FOOD BAR.

CHILDRENS FANCY DRESS

TOMBOLA

BOWLING FOR PIG

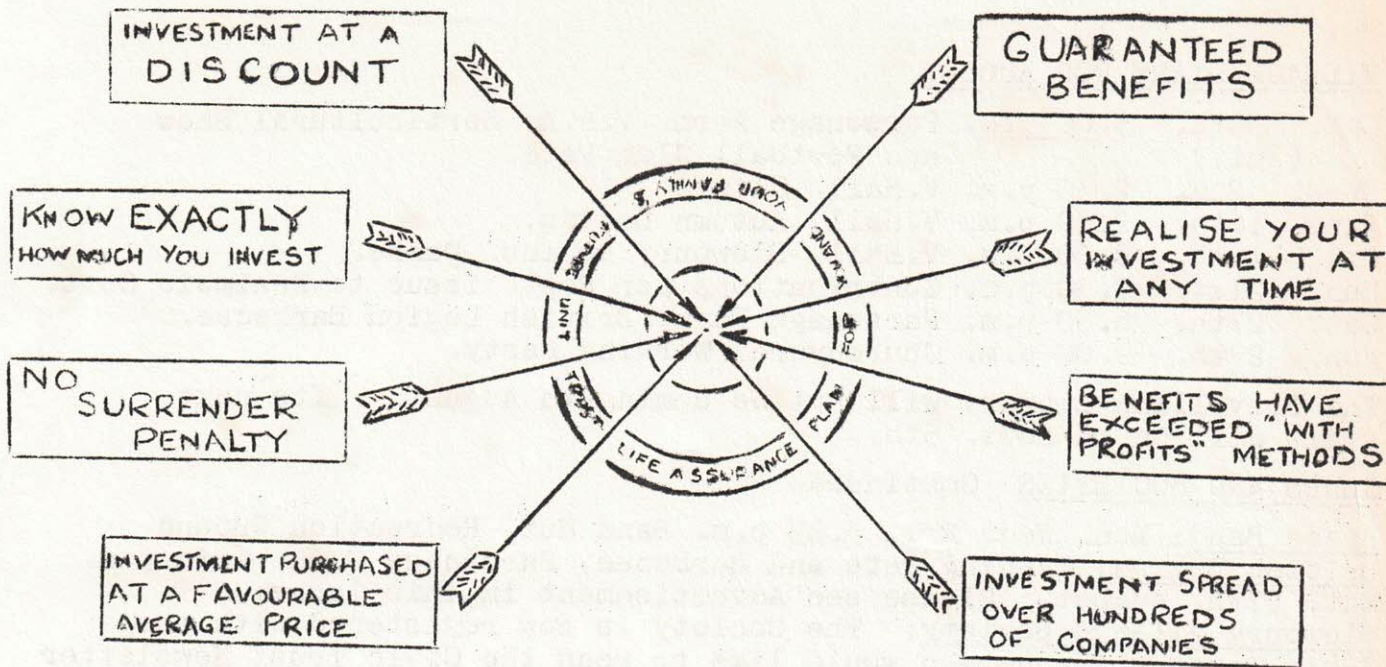
TUG-OF-WAR CONTEST

WHEEL OF FORTUNE

SQUARE DANCING

Bring the Family and enjoy yourselves

(Proceeds in aid of British Legion Benevolent Fund.)



FULL DETAILS FROM:—

RICHARD R. HUNT & PARTNERS,

UNIT TRUST - LIFE ASSURANCE BROKERS,
57, SLADE RD,
DIDCOT, BERKS.

WE DO NOT EMPLOY AGENTS
ALL BUSINESS CONDUCTED BY POST

The School Sports were held on Friday the 8th of July during the proceedings Major Junguis, a School Manager, opened the School Swimming Pool.

School Open Day. The Village School held an open day on Thursday 14th July, when parents saw examples of the childrens work and met teachers at the school.

A P.T.A. Barbecue was held on Saturday the 9th July. The evening was fine and visitors tested their skill at the sideshows. Then refreshed by beer, hot dogs and chickens they gathered round a large fire under the control of the scouts, to listen to a performance by the Mike Clarke Folk Group.

CLUBS AND SOCIETIES.

AUGUST MEETINGS

Autumn Leaves: The 'Autumn Leaves' Club held its first meeting at the Village Hall on Tuesday afternoon, July 19th. Owing to the heavy rain, and indisposition of some members, there were not so many as anticipated. We hope the weather will be kinder for the second meeting at 2.30 p.m. August 16th. We are very grateful to Mrs. Sheldon for her beautiful singing, also to Mrs. Couper and her band of willing helpers, who provided a marvellous 'Party' tea to celebrate the first meeting.

If anyone requires transport for 16th, kindly contact me by August 13th. R.Oakhill (Hon.Sec.)

VILLAGE DIARY FOR AUGUST

Sat. 30th. 5.00 p.m. Parsonage Farm. V.P.A. Horticultural Show
(July) and Football Club Fete.
Tues. 2nd. 2.30 p.m. V.Hall. Clinic.
Tues. 16th. 2.30 p.m. V.Hall. Autumn Leaves.
Fri. 19th. 9.00 p.m. V.Hall. Blewbury Robins. Dance.
Sun. 21st. 7.30 p.m. Contributions for Sept. issue to Healmwic Cott.
Sat. 27th. 6.30 p.m. Parsonage Farm. British Legion Barbecue.
Mon. 29th. 9.00 a.m. Churchyard. Working Party.

The Travelling Library will not be coming in August. Its next visit will be on Sept. 5th.

CLUBS AND SOCIETIES Continued.

Brass Band: Mon. Wed. Fri. 5.45 p.m. Band Hut, Recreation Ground.

British Legion: Evening Fete and Barbecue, Parsonage Farm, 6.30 p.m.

Sat. 27th. August. Please see Advertisement in this issue.

Blewbury Village Society: The Society is now registered with the Civic Trust. Anyone who would like to read the Civic Trust Newsletter can borrow a copy from Mrs. Richards, Healmwic Cottage. Life membership can be obtained for 2/6d. from Mrs. Russell, Ilbury's

Blewbury Robins: There will be a dance at the Village Hall on Friday 19th August from 9.00 p.m. to 1.00 a.m. Licensed Bar, tickets 4/- from Mrs. K. Street, Mrs. Greenaway (Eastfields), and Mrs. Aldridge (London Rd).

Football News: Evening practice on the Recreation Ground for the men's team will start during the first week in August. A number of players have already signed on for Blewbury. Unfortunately, some of last season's team will not be available, so new registrations for Blewbury are needed. Please contact the Hon. Sec, Tony Fortnam, 42 Grahame Close, 569; the Chairman, Captain Layman, Cleve House, 238; or Danny Coupar, 22 Eastfields.

The Blewbury Robins (under 14) have entered the North Berks Boys League and will have a full programme of fixtures.

Boys over 14 on September 1st should apply to Captain Layman, who will try to arrange friendly fixtures for them, when possible.

Folk Group: Every Saturday, 9.00 p.m. Dibleys.

Mothers Club: No meeting in August.

Royal and Antedeluvian Order of Buffaloes: Mondays at 7.45 p.m. at the Load of Mischief.

Village Produce Association: 5.00 p.m. Saturday 30th July.

19th Annual Horticultural Show at Parsonage Farm.

Village Stall: We want more flowers, fruit, vegetables, cakes, jams, pickles and eggs for sale. The V.P.A. takes 1d. in the shilling from the sale, the rest is returned to the producer.

Womens Institute: The W.I. are hoping to organise a children's concert, probably at the beginning of September. Would anyone with children aged four upwards, who would like to take part, please contact Mrs. Priestly, 33 Grahame Close, 524.

Editorial Note: Written contributions to Healmwic Cottage by 7.30 p.m. on Sunday 21st August please.